

# **Historic, Archive Document**

Do not assume content reflects current scientific knowledge, policies, or practices.

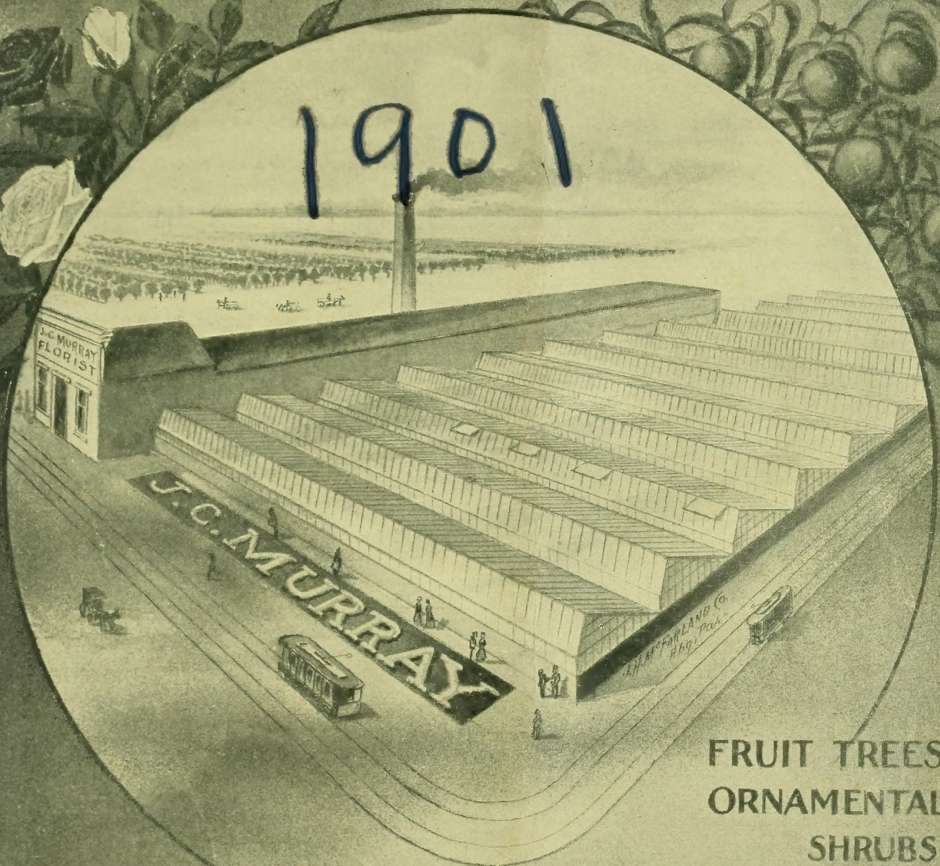




# JAMES G. MURRAY

LIBRARY  
RECEIVED  
JUN 11 1901  
U.S. DEPARTMENT OF AGRICULTURE

1901



FRUIT TREES  
ORNAMENTAL  
SHRUBS  
ROSES, ETC.

## FLORIST AND SEEDSMAN

403 Main St.

Greenhouses  
and Nursery  
Perry St. Entrance  
Glen Oak Park

PEORIA, ILL.



## To My Patrons and Friends.



WE are just commencing another Century, I must thank my patrons for the liberal support that has been extended to me, and hope in my expansive ventures, to merit a continuance of the favors entrusted to me heretofore.

In this **MY SECOND** issue of a Catalogue, I hope to place my business before you in a plain manner, and the instructions contained herein will be found of infinite benefit to my patrons throughout the United States. In adding the **SEED** and **NURSERY** business to my already large plant, I am filling a great want among my friends, who often have been obliged to go out of town to have their orders filled. These orders I shall now be able to execute with all confidence and despatch, having engaged the services of a thoroughly qualified and up-to-date assistant to manage this department.

**MY STOCKS OF SEEDS** for the Flower and Vegetable Garden have been selected with the greatest care, and I trust may prove to my customers that I am catering to their wants with the utmost earnest endeavor.

**THE MIXTURE OF LAWN GRASS SEED** which I make a specialty is the result of a long careful study and experience. It comprises only the best varieties and thoroughly cleaned seeds; so that it cannot fail to prove satisfactory to all purchasers if my instructions are minutely followed. The other **MIXTURES OF GRASSES FOR PARKS, GOLF GROUNDS, TENNIS COURTS**, etc., are equally well considered as to the quality of the soil, and situation, so that satisfactory results cannot fail.

All my stocks of **SEEDS FOR THE FARM** may be perfectly relied upon, to be of **good growth** and of quality unequalled. To my **NURSERY STOCK** I have also paid careful attention and selected only the very best from the most reliable sources. My **FRUIT TREES** have been carefully selected as to variety and good healthy stock. The **SMALL FRUITS** have received the same careful attention and will assuredly prove satisfactory.

**MY ORNAMENTAL TREES** comprise all the best varieties adapted to this climate and situation, both in Deciduous and Evergreen trees. My stock of **FLOWERING SHRUBS** is complete with all the leading varieties, and by careful selection a succession of bloom can be obtained from early spring until late in the fall. The **BEDDING-OUT PLANTS** for summer display comprise all the leading varieties of plants to make the Flower Garden attractive and beautiful.

**THE BULB DEPARTMENT**, as heretofore, will be up to the times in quality and variety, as I shall continue to import the best stock from Holland, Germany, Japan, and other principal markets.

In all this increase I shall endeavor to hold the same high reputation that has been customary in my Cut Flower Department, and I trust to receive a continuance of the same liberal patronage.

My stock of Decorative Plants will still be kept up to the original standard and many varieties added to my already large collection to make it more attractive.

I also wish to inform my friends in Peoria and neighborhood, who wish to lay out pleasure grounds, lawns on new estates, or to remodel old estates, that I am in a position to undertake any **LANDSCAPE WORK** which may be entrusted to me, under practical and experienced supervision.

**IN CONCLUSION** to this exhaustive introduction, I respectfully ask your liberal patronage, and hope by strict attention to your commands to merit the confidence so liberally given me in the past.

Very respectfully,

JAMES C. MURRAY.

**Notice.** The greatest care is exercised in selecting and purchasing the stock of seeds, and no warranty is given, expressed or implied, as to the quality or productiveness. If not accepted on these terms, seeds must be returned at once.—JAMES C. MURRAY.

### INSTRUCTIONS.

The following instructions are for the assistance of my patrons in ordering goods, and if you will follow them as closely as possible, you will assist me in avoiding delays and errors.

**Name and Address.** Please remember to write your name in full, also post-office, county and state plainly.

**How to Order Seeds.** In ordering seeds, be very careful to copy the name correctly and to note the variety and quantity you want.

At prices given, I deliver free by mail all seeds in packets, ounces and pints.

**Terms.** Cash with order. No goods shipped C. O. D. Make remittance by draft, post-office or **express money order**. Do not send **personal checks**. Postage stamps may be sent in payment, but please send only the one- and two-cent denominations.

All canvas bags, sacks, etc., will be charged for at cost price and money returned if the bags are returned clean and in good condition.

It is always necessary to give explicit instructions with every order; how to ship, whether by Freight or Express, naming the best route. By attention to this you will avoid delay.

**Special prices** to large growers buying in quantity, such as **Market-Gardeners, Farmers** and others, will be given on application.

JAMES C. MURRAY.

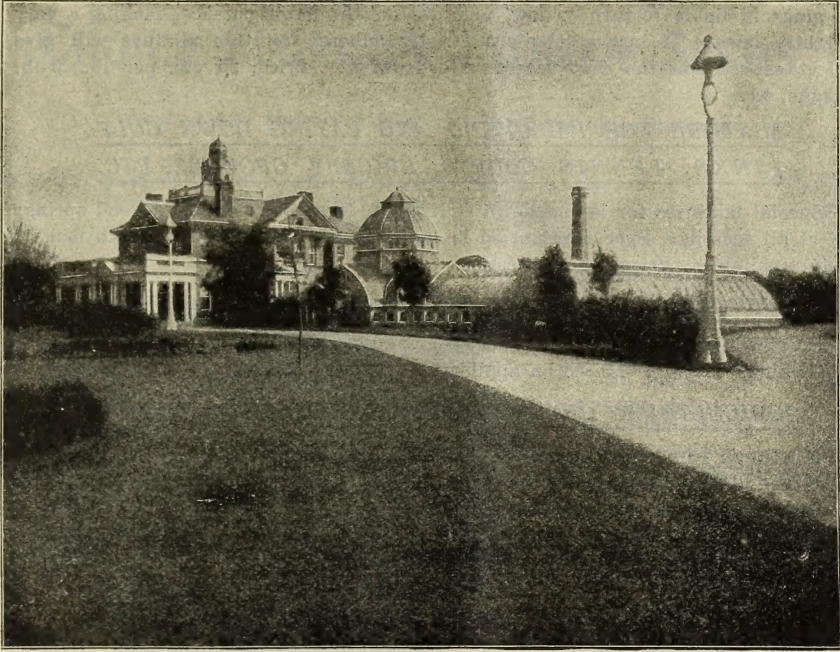


# MURRAY'S "VELVET TURF"

---

## ...LAWN GRASS SEED...

---



**MURRAY'S "VELVET TURF" GRASS SEED FOR LAWNS** consists of varieties best adapted for laying down a lawn, and giving the best green velvety turf in the shortest time. A careful study has been made to blend the varieties used in quantities suitable to the various soils, and the lay of the land; also to keep a fine, thick, green turf at all seasons. This mixture is so perfectly blended that a satisfactory and evergreen lawn is assured. The best time to sow Lawn Grass Seed is from April to the end of June, and from the latter part of August to the end of October. It is essentially necessary to have the land well cleaned from obnoxious weeds, and in good alluvial condition, before sowing the seed; and a day without any wind should be chosen for sowing, so that the seed may be evenly dispersed over the ground. This mixture is relatively the cheapest quality for the purchaser, as it is composed of only the best and highly cleaned seed, while a cheaper grade of seed would not be so thoroughly dressed and cleaned from weeds, etc.

**One pound of Murray's "Velvet Turf" Seed will sow 400 square feet.**

**Five-pound package of Murray's "Velvet Turf" Seed will sow 2,000 square feet.**

65 lbs. to 70 lbs. are required to sow 1 acre. Price, 25 cents per pound; 5-lb. package, \$1.

**Special prices for large quantities on application.**



## RENOVATING MIXTURE FOR OLD LAWNS

This mixture is specially adapted for the improvement of old lawns, where the finer varieties of dwarf evergreen grasses have died out, either from natural causes, or the appearance of obnoxious weeds, which are very often not noticed until the damage is done, leaving a thin bottom, so that in the hot summer months the grass is liable to turn yellow, and die out in large patches, making a very unsightly lawn. If instructions are strictly adhered to, this mixture will give perfect satisfaction the first season after sowing. Price, 25 cts. per lb.; 5-lb. package, \$1.

### MIXTURE FOR IMPROVING AND LAYING DOWN GOLF LINKS, TENNIS COURTS, CRICKET GROUNDS, ETC.

Special mixtures for laying down Golf Grounds, etc., to insure a good springy turf at all seasons. Special attention is given to the soil and situation to make a mixture suitable. Prices on application.

### MIXTURES OF GRASSES FOR PARKS AND CEMETERIES

Special mixtures for laying down such grounds are made with great care, and for all kinds of soils. Prices on application.

### AGRICULTURAL GRASS SEED FOR PERMANENT PASTURES

**Mixtures for Light or Sandy Soils.** Sow about 60 to 70 lbs. per acre.

**Mixture for Medium Soils.** 60 to 70 lbs. per acre.

**Mixture for Heavy or Clay Soils.** 60 to 70 lbs. per acre.

**Mixtures for Shady Places, Damp or Low-Lying Soils** are specially prepared according to situation and nature of soil. Prices on all mixtures for Permanent Pasture given on application.

### GRASS SEED FOR THE FARM. Separate

Orchard Grass, Red Top Grass, Kentucky Blue Grass, Timothy, or Herd Grass, Hungarian Grass, Millet, Common; Millet, Japanese; White Clover, Red Clover, Alsike, or Hybrid White Clover, Trifolium incarnatum, Lucerne, or Alfalfa, Rye Grass, Italian; Rye Grass, Perennial.

All the above are subject to fluctuation of the Market. Special prices will be given on application.

---

## CHOICE COLLECTIONS OF FLOWER SEEDS

These Collections are specially selected for the Amateur Gardener for summer display.

- No. 1. **Murray's Champion Collection.** Consisting of 36 distinct varieties. Hardy Annuals. Price, \$2.
- No. 2. **The Peoria Collection.** Consisting of 25 distinct varieties. Price, \$1.50.
- No. 3. **The Aristocrat Collection.** Consisting of 20 distinct varieties. Price, \$1.25.

- No. 4. **The Popular Collection.** Consisting of 15 distinct varieties. Price, \$1.
- No. 5. **The Little Gem Collection.** Consisting of 12 distinct varieties. Price, 75 cents.
- No. 6. **The Cosmopolitan Collection.** This collection comprises 8 varieties of fine free-flowering Hardy Annuals. Price, 50 cents.

Special Collections made for Park and Cemetery decoration for summer display.









A Cluster of Tuberous-Rooted Begonias.

	Per pkt.
<b>BEGONIA, Tuberous-Rooted, Choice Prize Varieties.</b> Finest single mixed; large flowers.....	\$0 50
“ “ “ <b>Choice Fringed Varieties.</b> This is a new and selected strain.....	50
“ “ “ <b>Choice Double.</b> Extra fine, large double flowers of brilliant colors.....	1 00
“ <b>Semperflorens hybrida fl. pl.</b> Extra choice novelty.....	1 00
<b>BELLIS perennis fl. pl. alba, “Snowball” (Double Daisy).</b> Extra choice.....	10
“ “ “ <b>Longfellow.</b> Selected; extra fine.....	10
<b>CALCEOLARIA hybrida grandiflora.</b> Very choice.....	25
“ “ <b>rugosa.</b> Choice for bedding out.....	25
<b>CANNA indica, Crozy’s New Hybrids.</b> Extra choice.....	25
<b>CARNATIONS, Extra Choice Bizarre Flake and Painted Lady.</b> This is an extra fine strain of double-flowered sorts.....	25
“ <b>Yellow-Ground Fancies.</b> This is an extra selected stock.....	25
“ <b>Perpetual, or Tree.</b> For pot culture.....	25
<b>CINERARIA hybrida grandiflora nana.</b> Extra large flowers; prize stock; splendid mixed.....	50
<b>COCKSCOMB, “Glasgow Prize.”</b> Extra choice variety.....	25
<b>CYCLAMEN persicum giganteum.</b> Extra fine strain. This seed is saved from the best large-flowered prize strain.....	25
<b>COBÆA scandens.</b> Half-hardy climbers; fine for vases.....	10
<b>COSMOS, Dwarf Early-Flowering.</b> Extra fine mixed; large flowers.....	10
<b>DAHLIA, Double Cactus Varieties.</b> Extra choice hybrids.....	25
“ <b>Extra Large Double-Flowering Varieties.</b> .....	25
<b>DIANTHUS Heddewigii diadematus fl. pl.</b> Very handsome and extra choice.....	05
“ “ <b>laciniatus.</b> Choice mixed.....	05
<b>GLOXINIA grandiflora alba.</b> Pure white flowers.....	50
“ <b>Extra Fine Mixture of erect and horizontal-flowering.</b> This strain is considered par excellence.....	50
<b>CAILLARDIA, James Kelway.</b> One of the best and most distinct hardy perennial varieties; scarlet, edged with gold; large flowers.....	15
“ <b>grandiflora compacta.</b> Very distinct; large flowers.....	10
“ <b>Picta Lorenziana.</b> A very attractive annual.....	05
<b>CERANIUM, Choice Mixed Zonale Varieties.</b> .....	25
“ “ “ <b>Gold, Bronze and Variegated</b> .....	25





Pansies.

	Per pkt.
<b>CODETIA, Four Distinct Varieties.</b> Whitney, Brilliant, Lady Albemarle and Princess Henry.....	\$0 05
<b>HELIOTROPE, New Large-Flowering.</b> Splendid mixed.....	10
<b>HEUCHERA sanguinea splendens.</b> Choice perennial; scarlet flowers.....	10
“ <b>hybrida.</b> Choice novelty; extra fine.....	50
<b>HOLLYHOCK, Extra Selected</b> from Chater's stock; all prize stock.....	25
<b>IBERIS Gibraltarica hybrida.</b> Selected stock.....	10
“ <b>sempervirens.</b> Hardy white Candytuft.....	10
<b>IMPATIENS Sultani.</b> Fine for pots or bedding out.....	15
<b>LOPHOSPERMUM scandens.</b> Fine for vases or hanging baskets.....	10
<b>LANTANA hybrida.</b> Choice mixed.....	05
<b>LATHYRUS latifolius (Perennial Sweet Pea).</b> Finest mixed.....	05
<b>LOBELIA, Crystal Palace compacta.</b> Selected stock; true blue.....	10
“ <b>cardinalis, Queen Victoria.</b> A very choice variety.....	15
<b>MARICOLD, African.</b> Lemon and Orange. Large flowers.....	05
“ <b>French.</b> Dwarf Striped Extra. Yellow, and dark brown.....	05
☞ The seed is saved from selected double flowers only and in separate colors.	
<b>MAURANDIA Barclayana, Mixed.</b> Fine for hanging baskets or vases.....	05
<b>MIMOSA pudica. (Sensitive Plant)</b> .....	05
<b>MIMULUS tigrinus duplex, Fire King.</b> New; very showy; extra novelty.....	25
“ “ “ <b>Hose-in-Hose</b> .....	10
<b>MYOSOTIS (Forget-Me-Not) dissitiflora.</b> Blue; the best of all.....	10 cts. and 15
“ “ “ <b>alba.</b> White.....	10 cts. and 15
<b>NASTURTIUM, Tall-Growing Named Varieties</b> (Tall crimson, yellow-leaved)—King Theodore (dark), Scheucranium, Scarlet (yellow leaves), Schulzii (dark leaves), Vesuvius, Von Moltke.....	05
“ <b>Tom Thumb Varieties</b> —Carmine King, Cœruleo-roseum, Crystal Palace Gem, Empress of India, Golden King, Ruby King, Spotted, Lateum.....	05
<b>NEMOPHILA insignis.</b> Blue.....	05
“ <b>maculata</b> .....	05
<b>NICOTIANA affinis.</b> White flowers, star-shaped; very fragrant.....	05
<b>PÆONIA Chinensis, Finest Double</b> herbaceous varieties.....	10
<b>PANSIES, Choice Mixed.</b> All colors, very select strain.....	5 cts. and 10
“ <b>Peoria Champion Strain.</b> Extra large flowers of great substance and diversity of color; exhibition stock.....	50
“ <b>Named Varieties.</b> Distinct colors; extra large flowers—Azure Blue, Emperor William, Fawn Color, Fire King, King of the Blacks, Light Blue, Peacock, Large White (purple eye), Striped, Yellow. The collection of 10 varieties for \$1.....	15
<b>PASSIFLORA cœrulea</b> (Blue Passion Flower).....	05
“ <b>van Volxemi</b> (Scarlet Passion Flower).....	20

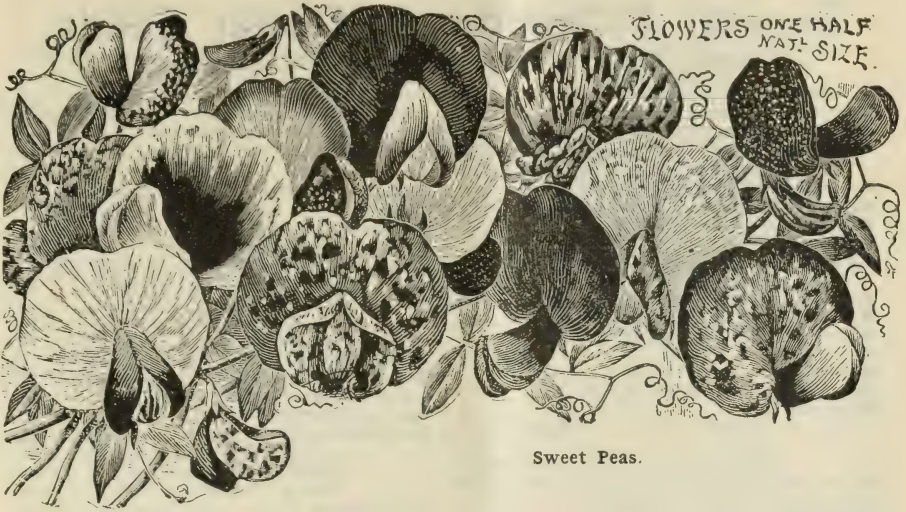




Petunia hybrida.

	Per pkt.
<b>PETUNIA hybrida.</b> Finest mixed colors, self and striped.....	5 cts. and \$0 10
“ “ <b>fimbriata.</b> Extra choice; large fringed flowers .....	15 cts. and 25
“ “ <b>Double Fringed Lady-of-the-Lake.</b> Pure white, extra fine double flowers of immense size and substance.....	25
“ “ <b>Double Fringed, All Colors Mixed.</b> Extra fine stock.....	15 cts. and 25
<b>PHLOX Drummondii grandiflora.</b> Extra choice large flowers; fine mixed .....	05
“ “ “ Pure White, Flesh Color, Scarlet, Rose, Brilliant, Chamois Rose, Atropurpurea, Striata. The above 8 distinct colors for 25 cts.....	05
“ <b>decussata, Perennial, Finest Mixed</b> .....	10
<b>PINKS (Dianthus plumarius), Scotch Hardy Florists' Pink.</b> Colors various.....	100 seeds, \$1.
“ “ (semperflorens). Choice fragrant hardy class, with a great percentage of double flowers from seed.....	50
<b>PRIMULA Chinensis fimbriata.</b> This stock of seed has been selected with the greatest care by one of the best Primula growers in England from his best exhibition stock.....	50 cts. and 1 00
“ “ “ <b>filicifolia.</b> Fern-leaved; choice mixed .....	50
“ “ “ <b>Choice Double.</b> A very large percentage of this variety comes perfectly true from seed.....	1 00
“ <b>Obconica hybrida, Very Choice Mixed.</b> Various .....	25
“ <b>cortusoides.</b> Very fine pot plant .....	20
“ <b>Sieboldii.</b> Extra fine large-flowered variety.....	25
<b>POLYANTHUS.</b> Extra fine quality large-flowered fancy .....	15
“ <b>Gold-Laced.</b> Fine selected stock .....	20
“ <b>Yellow English Primrose.</b> True stock .....	25
<b>RESEDA odorata (“Mignonette”), Improved Matchet.</b> Very fine.....	5 cts. and 10
“ “ “ <b>Miles' Spiral Improved Defiance.</b> Extra.....	5c. and 10
“ “ “ <b>Murray's Coliath.</b> This is an extremely large-flowered and strong-growing variety; very fragrant; produces immense flower-spikes; fine for pot culture. A gem.....	50 cts. and 1 00
<b>SALVIA splendens, Improved.</b> Very compact habit.....	05
“ <b>patens, Blue.</b> Fine blue flowers; very choice.....	10
<b>SCABIOSA hybrida, or “Mourning Bride.”</b> An improved variety, with exceedingly large double flowers. Fine for cutting. Mixed colors.....	05
<b>SENECIO elegans fl. pl., Dwarf Double.</b> Very showy annual, suitable for park display.....	10





Sweet Peas.

- SOLANUM (Jerusalem Cherry).** Ornamental plant bearing a quantity of red berries ..... Per pkt. \$0 05
- STATICE Suworowi.** Very pretty pot plant of easy cultivation..... 10
- STOCKS, Dwarf German Ten-Weeks.** Extra choice mixed..... 25
- “ **Giant Perfection Ten-Weeks.** Extra fine selection ..... 25
- Both the above varieties can be had in the following distinct separate colors: White, Crimson, Pink, Lavender, Scarlet and Purple.
- “ **East Lothian (True stock).** This is fine for pot culture in distinct colors, White, Scarlet and Purple ..... each color.. 25

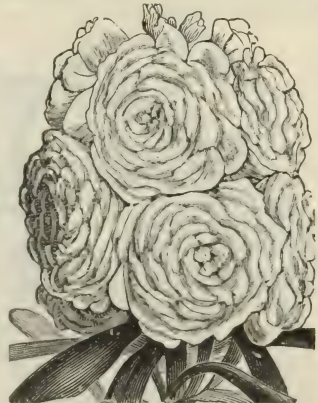
**SWEET PEA, Mont Blanc.** A choice novelty. The earliest white Sweet Pea ever put before the Florist; 3 weeks earlier than any other variety. Outrivals Emily Henderson by that time. Pure white flowers, compact habit; it is a gem. Sealed original packets, \$1 each.

**SWEET PEAS (Lathyrus odoratus).** The following are 8 of the best named varieties, giving a diversity of color:

- Blanche Ferry.** Rosy red, wings blush.
- Firefly.** The best scarlet.
- Emily Henderson.** The best white.
- Captain of the Blues.** The best blue.
- Butterfly, Improved.** White, wings lavender.
- Dorothy Tennant.** Rosy heliotrope.
- Stella Morse.** Cream and apricot.
- Monarch.** Purple and maroon.

A collection of the above varieties, small packets, 30 cts.; single packets, 5 cts.; per oz., each variety, 10 cts.

- Per pkt.
- THUNBERGIA alata.** Pretty climbing plant; good for vases.....\$0 10
- TORENIA Fournieri grandiflora.** A pretty pot plant; flowers profusely..... 10
- VERBENA hybrida compacta.** Very choice; mixed colors.....10 cts. and 15



German Stocks.

- VERBENA hybrida Mammoth grandiflora.** Novelty of last year in 4 distinct colors: White, Firefly, Rose and Carmine Shades and Dark Scarlet Shades; extra fine stock ..... Per pkt. 50 cts. and 1 00
- VINCA, Mixed Colors.** Very pretty bedding out plant..... 10
- WALLFLOWER, Single Mixed.** Comprising such sorts as Belvoir Castle, Harbinger, Golden King, Ruby Gem, Blood Red, etc.....5 cts. and \$0 10
- ZINNIA Haageana fl. pl.** Fine bedding plants, mixed colors.....5 cts. and 10

# General Collection of Flower Seeds.

## HARDY AND HALF-HARDY ANNUALS AND PERENNIALS.

Hardy annuals may be sown in the open ground early in May. Dig and prepare the ground thoroughly, so as to have it fine and in good condition. Half-hardy annuals require sowing later, say latter part of May or beginning of June, or to get them in flower earlier they may be sown in pots or boxes inside greenhouse and transplanted when large enough.

	Per pkt.		Per pkt.
<b>Adonis aestivalis</b> (Flos) .....	\$0 05	<b>Chrysanthemum</b> , Annual. Fine mixed.	
<b>Abronia umbellata</b> . Basket plant.....	05	Single .....	\$0 05
<b>Allonsoa</b> , Finest Mixed .....	05	<b>Chrysanthemum</b> , Annual. Fine mixed.	
<b>Alyssum</b> , Sweet .....	05	Double. Splendid colors .....	10
<b>Amaranthus melancholicus ruber</b> .....	05	<b>Clarkia pulcherrima</b> . Pink .....	05
" Mixed sorts .....	05	" <i>Integripetala alba</i> . White .....	05
<b>Anchusa sempervirens</b> .....	05	" <i>Mrs. Langtry</i> .....	05
<b>Aquilegia</b> (Columbine), Mixed .....	05	" Double Fine Mixed .....	05
<b>Arabis alpina</b> . White .....	10	" Single Fine Mixed .....	05
<b>Aster</b> . See Choice Florist Flowers.		<b>Cobea Scandens</b> . See Florist Flowers.	
<b>Bartonia aurea</b> .....	05	<b>Celosia plumosa</b> , Feathered Cockscomb..	05
<b>Begonia Rex</b> .....	25	<b>Coleus</b> , Choice varieties mixed .....	25
" <i>Pearcei</i> .....	20	<b>Coix lachryma</b> (Job's Tears).....	05
" <i>Metallica</i> .....	20	<b>Collinsia bicolor</b> .....	05
" <i>Semperflorens</i> , Mixed .....	50	" <i>alba</i> . White .....	05
<b>Browallia elata</b> , Mixed .....	05	" <i>tinctoria purpurea</i> , new .....	25
<b>Calampelis Scaber</b> . Climber .....	05	" Mixed Varieties .....	05
<b>Calandrinia grandiflora</b> .....	05	<b>Convolvulus minor</b> .....	05
<b>Calendula</b> , Meteor .....	05	" <i>tricolor</i> , Double blue .....	05
" <i>Prince of Orange</i> .....	05	" <i>Major</i> (Morning Glory).....	05
<b>Calliopsis</b> . Best dwarf mixed .....	05	<b>Coreopsis grandiflora</b> .....	05
<b>Campanula media</b> (Canterbury Bells)..	05	<b>Cosmos</b> , Finest Mixed .....	05
" <i>pyramidalis</i> , Blue .....	05	" <i>New Mammoth</i> .....	05
" <i>White</i> .....	05	<b>Cypress Vine</b> .....	05
<b>Canary Creeper</b> ( <i>Tropaeolum Canariensis</i> )	10	<b>Delphinium formosum</b> .....	10
<b>Candytuft</b> , White .....	05	" <i>nudicaule</i> .....	10
" <i>Crimson</i> .....	05	" <i>Zalil</i> . Extra fine .....	20
" <i>Lilac</i> .....	05	<b>Dianthus Heddwigii</b> .....	05
" <i>Mixed</i> .....	05	" <i>diadematus fl. pl.</i> .....	10
<b>Carnations</b> . See Choice Florist Flowers.		" <i>laciniatus mixed</i> .....	10
<b>Cockscomb</b> . See Choice Florist Flowers.		" <i>Double mixed</i> .....	10
<b>Centaurea Cyanus</b> (Corn Bottle). Mixed		<b>Dittamnus Fraxinella</b> .....	05
Colors .....	05	<b>Digitalis gloxinioides</b> (Foxglove. Finest	
<b>Centaurea gymnocarpa</b> .....	10	mixed) .....	10
		<b>Dodecatheon Media</b> , Shooting Star .....	10
		<b>Dolichos</b> , Fine Mixed .....	05
		<b>Erysimum nanum compactum</b> .....	05
		<b>Eschscholtzia crocea fl. pl.</b> .....	05
		" <i>Mandarin</i> .....	05
		" <i>Golden West</i> .....	10
		<b>Gilia nana compacta</b> , Mixed .....	10
		<b>Godetia</b> , The Bride .....	05
		" <i>rosea alba</i> .....	05
		" <i>Tom Thumb</i> .....	05
		<b>Grevillea robusta</b> .....	25
		<b>Helianthus</b> (Sunflower) .....	05
		" <i>hybrida fl. pl.</i> , Novelty .....	25
		<b>Heliotrope</b> , Fine Mixed .....	10
		<b>Hibiscus Africanus</b> .....	05
		<b>Hollyhock</b> . See Florist Flowers.	
		<b>Ipomea bona nox</b> .....	05
		" <i>Quamoelit</i> .....	05
		" <i>Leari</i> .....	10
		" <i>grandiflora</i> (Moonflower) .....	10
		<b>Larkspur</b> , Dwarf German Rocket .....	05
		" <i>Hyacinth-Flowered</i> .....	10
		<b>Linum grandiflorum rubrum</b> .....	05
		<b>Lupins Chruikshankii</b> .....	05
		" <i>nanus</i> , Dwarf .....	05
		" <i>All Kinds Mixed</i> .....	05
		<b>Lychnis Chalcedonica</b> .....	05
		" <i>Haageana</i> , Fine Mixed .....	10
		" <i>Viscaria flore pleno</i> , Fine .....	25
		<b>Malope grandiflora</b> , Mixed .....	05
		<b>Marvel of Peru</b> , Mixed .....	05



Rex Begonia.



HARDY AND HALF-HARDY ANNUALS AND PERENNIALS, continued.

	Per pkt.
<b>Mignonette.</b> See Florist Flowers.	
<b>Mimulus</b> Moschatus (Musk Plant).....	\$0 10
"    tigrinus, Fine spotted.....	05
<b>Nasturtium,</b> Dwarf Mixed.....	05
"    Tall Mixed.....	05
<b>Nemophila</b> insignis, Fine blue.....	05
"    maculata.....	05
"    Mixed. All sorts.....	05
<b>Oenothera</b> (Evening Primrose).....	05
"    Youngii, Novelty.....	25
<b>Pansy.</b> See Florist Flowers.	
<b>Poppy,</b> Shirley, Mixed Double.....	10
"    Mikado.....	05
"    Lævigatum compactum, Novelty.....	25
"    Double. All Sorts Mixed.....	05
"    Single. " ".....	05
<b>Pentstemons,</b> Hybrid, Mixed.....	10
<b>Petunia.</b> See Choice Florist Flowers.	
<b>Phlox Drummondii.</b> See Choice Florist Flowers.	
<b>Polemonium</b> cœruleum (Jacob's Ladder).....	05
<b>Portulaca</b> compacta, New variety.....	10
"    Double. A splendid strain... ..	10
"    Mixed Single.....	05



Shirley Poppy

	Per pkt.
<b>Potentilla,</b> Double, Extra Fine Mixed..	\$0 25
<b>Primula.</b> See Choice Florist Flowers.	
<b>Pyrethrum,</b> Golden Gem.....	05
"    hybridum, Perennial, Single.....	05
"    hybridum, Perennial, Double choice.....	25
<b>Ricinus</b> (Castor Oil Plant), Mixed.....	05
"    atropurpureus. Dark foliage... ..	10
"    Gibsonii (Duchess of Edinburgh).....	10
<b>Rudbeckia</b> Neumani, Fine Perennial... ..	10
"    Bicolor superba, Fine perennial.....	05
<b>Salvia.</b> See Florist Flowers.	
<b>Saponaria</b> multiflora, Scarlet Queen. A fine edging plant, very compact.....	05
<b>Scabiosa</b> (Mourning Bride). See Florist Flowers.	
<b>Schizanthus</b> grandiflorus, Fine Mixed... ..	05
<b>Salpiglossis</b> grandiflora, Mixed; a gorgeous annual.....	10
<b>Silene</b> compacta fl. pleno. Choice.....	05
"    Fine Mixed Varieties.....	05
<b>Stocks.</b> See Florist Flowers.	
<b>Sweet Rocket.</b> Finest Mixed.....	05



Sweet William.

	Per pkt.
<b>Sweet Sultan.</b> Mixed yellow, white and purple.....	\$0 05
<b>Sweet Peas.</b> See Florist Flowers.	
<b>Sweet William</b> ( <i>Dianthus barbatus</i> ).— Hunt's Perfection. A choice strain. Mixed.....	05
Murray's New Large-Flowered Strain. Extra large flowers. A choice strain.....	20
Extra Choice Double. Large flowers, Mixed.....	10
<b>Tagetes</b> signata pumila, Golden Ring. A very pretty dwarf marigold.....	10
<b>Thunbergia</b> alata. A fine basket plant... ..	10
<b>Tropæolum, Lobbianum Varieties</b> — Asa Gray, cardinalis, Lucifer, Golden Queen, Mad. Gunther, Napoleon 3d, Queen Victoria, Spitfire, Crystal Palace Scarlet, Triomphe de Grand..... each	05
<b>Tropæolum, Lobbianum,</b> Murray's Lilliput Strain, Extra.....	10
<b>Tropæolum Canariense</b> (Canary Creeper).....	05
<b>Venus' Looking Glass.</b> Mixed colors... ..	05
<b>Verbena.</b> See Florist Flowers.	
"    citriodora. Very fragrant... ..	25
<b>Veronica.</b> Perennial mixed sorts.....	10
<b>Violet</b> odorata semperflorens (Sweet violet).....	25
<b>Virginian Stock.</b> Finest mixed.....	05
"    Crimson King and Fairy Queen each.....	10
<b>Viscaria.</b> Finest Mixed Sorts.....	05
<b>Wahlenbergia</b> ( <i>Platycodon</i> ) grandiflora, mixed sorts.....	10



Verbena.



## CHOICE EVERLASTING FLOWERS.

A few varieties of Everlasting Flowers which can be grown by any amateur.  
**Rules Necessary for Cultivation.**—Sow in good rich light garden soil, well pulverized by digging and cultivation. Sow in open ground after middle of May, take care in transplanting, and watch well from snails and other injurious insects. If required to dry for winter ornamentation, cut a day or two before the flowers come to perfection, tie in small bunches loosely and hang in a dry airy room, heads down.



Helichrysum.

	flore pleno. One of the best. All colors mixed.....	Per pkt.	05
<b>HELICHRYSUM monstrosum</b>	nana flore pleno. The best dwarf. All colors mixed..	10	10
“	“ minimum flore pleno. Novelty. All colors mixed....	10	10
<b>COMPHRENA globosa, Purple.</b>	A very pretty Everlasting flower, with clover-shaped heads of bloom .....	05	
“	“ <b>Rose.</b> A very pretty Everlasting flower, with clover-shaped heads of bloom.....	05	
“	“ <b>White.</b> A very pretty Everlasting flower, with clover-shaped heads of bloom .....	05	
“	“ <b>Haageana.</b> Orange-colored flowers.....	05	
<b>RHODANTHE maculata alba grandiflora</b>	.....	10	
“	atrosanguinea. A very fine variety .....	10	
“	<b>Double White and Red Mixed.</b> Extra fine .....	20	
<b>XERANTHEMUM, Choice Double Mixed</b>	.....	05	

The collection of 15 varieties, 1 packet each, for \$1.

## CHOICE BULBS AND TUBERS.

A variety of the following flowering and decorative bulbs and tubers are kept in stock in their proper seasons, and customers can always rely upon the best quality on the market.

<b>TUBEROUS-ROOTED BEGONIAS, Choice Single.</b>	Mixed colors.....	\$0 20	\$2 00
“	“ <b>Extra Choice Double.</b> Mixed colors .....	35	4 00
<b>AGAPANTHUS umbellatus</b> (Blue African Lily).	Fine for pot culture .....	25	
<b>ANEMONE fulgens.</b>	In variety .....	25	
<b>CALADIUM esculentum</b> and <b>Fancy Varieties</b> .....	25 cts., 50 cts. and 75		
<b>CYCLAMEN persicum giganteum.</b>	Very choice stock.....	20	2 00
<b>GLADIOLUS Gandavensis.</b>	A very choice mixture.....	25 cts. to	50
“	<b>Lemoinei.</b> This is remarkable for the choice marking of its flowers.....	50 cts. to	1 00
<b>GLOXINIA.</b>	Choice and large flowers; exceedingly fine .....	25	
<b>LILIUM auratum</b> (Japanese Lily).	Large fragrant flowers .....	25	2 50
“	<b>lancifolium rubrum, roseum and album.</b> This is a choice Lily for pots or planting out in spring.....	25	2 50
<b>LILY-OF-THE-VALLEY CLUMPS.</b>	Fine for planting in borders.....	25	
<b>TUBEROSE, The Pearl.</b>	Best of all the Tuberoses; dwarf and fragrant...25c. to	35	
<b>VALLOTA purpurea</b> (Scarboro Lily).	Flowers scarlet; fine for pots .....	50	

## CHOICE IMPORTATIONS OF HOLLAND, FRENCH AND OTHER BULBS

In their proper seasons, viz.

Hyacinths (of all kinds, double and single), Tulips (double and single), Crocuses, Snowdrops, Anemones, Narcissus (all varieties), Callas, Freesias, Jonquils, Ranunculus, etc. Prices will be as low as compatible for good well-grown stock, true to name and reliable.



# Vegetable Seeds.

**Notice to Florists and Market-Gardeners: Special Trade prices** will be made on all kinds of Seeds of the best quality only. Seeds tested and reliable.

**NOTICE:** Any customers wishing their orders sent by mail must enclose extra postage at the rate of 8 cents per pound, or 10 cents per quart.

## ASPARAGUS.

Sow the seed early in the spring in rows 1 foot apart in good enriched garden soil. Thin out to 3 inches when large enough, and the following spring transplant the roots in rows about 15 inches apart and 9 to 12 inches between the plants. Be sure to have the land well worked and enriched with good rotten manure.

*One ounce will sow a row 40 feet long.*

**Conquer's Colossal.** A large good standard variety. Pkt. 5 cts., oz. 10 cts.

**Palmetto.** A southern variety, of very strong growth. Pkt. 5 cts., oz. 10 cts.

**Strong 2-year-old plants of Colossal, 75 cts. per 100. Strong 2-year-old plants of Palmetto, \$1 per 100.**

## BEANS.

One quart will sow about 100 feet. Sow first week in May and at intervals of every 2 weeks until about middle of August, in rows, dropping the seed about 2 inches apart. Leave 18 inches between rows for garden, and 2½ feet between rows for field.

**Golden Wax, Improved Black Wax, Valentine Wax (New), Rustless Golden Wax.** Pkt. 5 cts., pt. 18 cts., qt. 35 cts.

### GREEN-POD VARIETIES.

**Improved Early Valentine, Long Yellow Six-Weeks, Extra-Early Refugee, New Stringless Green-Pod** (a superior sort). Pkt. 5 cts., pt. 18 cts., qt. 35 cts.

### BUSH, or DWARF LIMA.

May be planted the same as above, but require more room between the plants and in the rows.

**Dreer's Dwarf Lima.** A fine variety, early and productive. Pkt. 10c., pt. 25c., qt. 40c.

**Burpee's Bush Lima.** Early, productive, of fine flavor. Pkt. 10c., pt. 25c., qt. 40c.

### POLE, or RUNNING VARIETIES.

**King of the Garden Lima.** Very productive, of fine flavor. Pkt. 10c., pt. 25c., qt. 40c.

**Dreer's Improved Lima.** Distinct, of fine quality, very productive. Pkt. 10 cts., pt. 25 cts., qt. 40 cts.

**Old Homestead.** The earliest pole Bean; immense cropper. Pkt. 10c., pt. 25c., qt. 45c.

## BRUSSELS SPROUTS.

A most delicious vegetable. Sow in open ground in May and transplant in July as you would cabbage plants. After the early frosts in fall the miniature cabbages are of exquisite flavor.

**Long Island Improved Stock.** Considered the best. Pkt. 5 cts., oz. 25 cts.

## BEETS.

### TABLE VARIETIES.

Sow as early in spring as the ground can be worked, in good rich manured soil, and at intervals of 2 or 3 weeks until end of July. Sow in drills about 1 inch deep and 15 inches between the rows, thinning out to 4 inches apart. The young Beets are most excellent greens.

*One ounce will sow 40 feet.*

**Early Blood-Red Egyptian.** Quick-growing; a good cropper. Pkt. 5 cts., oz. 10 cts., lb. 75 cts.

**Early Blood Turnip.** A good old standard sort. Pkt. 5 cts., oz. 10 cts., lb. 75 cts.

**Improved Half-Long.** This is an excellent variety. Pkt. 5 cts., oz. 10 cts., lb. 75 cts.

**Swiss Chard.** The leaves of this variety are often used for Sea Kale. Pkt. 5 cts., oz. 10 cts., lb. 75 cts.

**BEETS FOR STOCK-FEEDING AND MANGEL WURZEL.** See Agricultural Seeds.



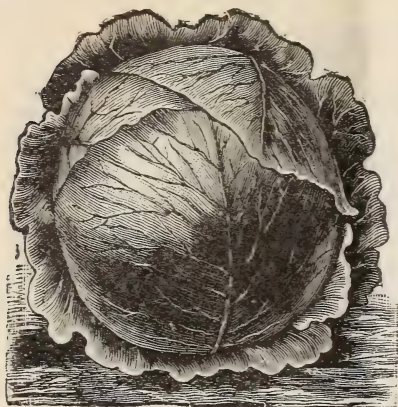
New Stringless Green-Pod Beans.

HENRY, ILL., Dec. 17, 1900.

Mr. Murray has supplied me with plants and flowers for a number of years, and they have been satisfactory in every respect.

MRS. W. T. LAW.





## CABBAGE.

Sow under glass in February or March for early use, transplanting as soon as the ground can be got ready. Sow for main crops in May and transplant in July; the early sorts can be planted much closer together than the latter kinds.

*One ounce of seed will produce about 2,000 plants.*

**Early Jersey Wakefield.** A fine early variety. Pkt. 5 cts., oz. 20 cts.

**Early Winnigstadt, Select Stock.** One of the best early sorts. Pkt. 5 cts., oz. 20 cts.

**Early Flat Drumhead.** A good variety. Pkt. 5 cts., oz. 20 cts.

### MAIN-CROP VARIETIES.

**Large Drumhead Improved.** Fine main-crop variety. Pkt. 5 cts., oz. 20 cts.

**Fottler's Improved Brunswick.** A world-beating variety. Pkt. 5 cts., oz. 25 cts.

**Savoy Large Drumhead.** Curled; excellent flavor. Pkt. 5 cts., oz. 20 cts.

**Red Dutch.** Fine for pickling. Pkt. 5 cts., oz. 20 cts.

**CABBAGE PLANTS** supplied for planting at 50 cts. per 100.

## CAULIFLOWER.

This choice succulent vegetable requires similar treatment to the Cabbage, but an extra rich soil. Give a liberal supply of water during the dry summer time; manure water once a week is advantageous and will pay the grower well for his trouble.

**Dwarf Early Snowball, Selected Stock.** The earliest and most reliable variety; dwarf and compact growth. Pkt. 25 cts.

**Early Paris.** A good variety. Pkt. 10 cts., oz. 50 cts.

**Autumn Giant.** A large late variety, protected by its foliage. Pkt. 10 cts., oz. 50 cts.

**CAULIFLOWER PLANTS** in spring, 75 cts. per 100.

## CURLED CRESS.

An excellent pungent salad for early spring. Every family can have this choice salad by sowing in a box at their homes, without a gardener. Pkt. 5 cts., oz. 10 cts.

## CARROT.

Sow the seed about the last of April or beginning of May in well-prepared soil, deeply cultivated. Sow half an inch deep, and 12 to 15 inches between the rows, thinning out when large enough. For early use sow in hot-beds.

*One ounce will sow a row about 100 feet long.*

**French Forcing.** The best adapted for early work. Pkt. 5 cts., oz. 15 cts., lb. \$1.

**Danvers Half-Long.** Excellent quality and good cropper. Pkt. 5 cts., oz. 15 cts., lb. 75 cts.

**Improved Long Orange.** Fine for main crop. Pkt. 5 cts., oz. 15 cts., lb. 75 cts.

## CELERY.

Sow in April as soon as the ground can be got in condition. It should be well worked and fine, not necessarily rich, but well pulverized. When large enough transplant into beds about 3 inches apart; this causes the plants to make a mass of fibrous roots, so that they are easily lifted to plant out in the field or garden, which should be done in latter part of June or beginning of July, in a good rich soil. Leave about 6 to 9 inches between the plants and 3 feet between rows for garden; 4 feet will be required for field work. Water frequently in dry weather. Earthing up should begin early in August.

*One ounce produces about 2,000 plants.*

**White Plume (Self-Blanching).** A good early sort. Pkt. 5 cts., oz. 25 cts.

**Golden Self-Blanching.** Fine, crisp and good-flavored. Pkt. 5 cts., oz. 25 cts.

**Pink Plume.** An excellent variety, fine for winter. Pkt. 5 cts., oz. 25 cts.

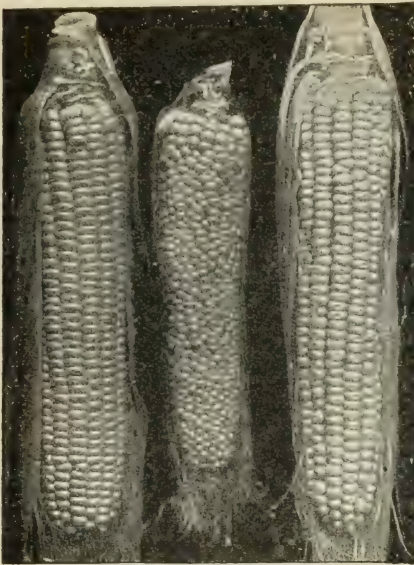
**Boston Market.** The best winter Celery grown. Pkt. 10 cts., oz. 40 cts.

**Celeriac (Turnip-Rooted Celery).** Grown for salads and soup-flavoring. Pkt. 5c., oz. 25c.

**CELERY PLANTS** at season, 60c. per 100.



Golden Self-Blanching.



Types of Sweet Corn.

## CORN, SWEET, or SUGAR.

Plant in hills about 4 feet apart all ways. The early or dwarf-growing sorts can be planted in rows 4 feet apart and 9 inches in the row. Sow in April.

*One quart plants about 200 hills.*

**First of All.** Claimed to be the earliest grown. Pkt. 5 cts., pt. 15 cts., qt. 25 cts.

**Crosby.** Extra-early. A well-known variety. Pkt. 5 cts., pt. 15 cts., qt. 20 cts.

**Early Minnesota.** A good standard sort. Pkt. 5 cts., pt. 15 cts., qt. 20 cts.

**Stowell's Evergreen.** The best late Sugar Corn grown. Pkt. 5 cts., pt. 15 cts., qt. 20c.

**Golden Pop.** The very best Corn that pops, on the ear only, 30 cts. per lb.

## CUCUMBERS.

Cucumber seed should not be sown in the open ground before June. The soil should be a rich sandy loam (if you have not got it make it) well manured. Plant in hills 4 feet apart. Watch the plants carefully in their early stage of growth and keep clear of insect pests.

*One ounce will sow about 50 hills.*

**Improved White Spine.** Fine main-crop variety. Pkt. 5 cts., oz. 10 cts.

**Early Jersey Pickling.** Esteemed for pickling. Pkt. 5 cts., oz. 10 cts.

**Westerfield.** Said to be an improvement on Early Jersey. Pkt. 5 cts., oz. 10 cts.

**Telegraph.** An English variety for growing in hotbeds or under glass; very prolific; cucumbers 18 to 20 inches long, of exquisite flavor. Pkt. 25 cts.

## CORN SALAD, or FETTICUS.

Sow as early in spring as possible. If required very early sow in September and winter exactly as you would spinach.

*One ounce will sow a row of more than 100 feet.*

**Corn Salad, or Feticus.** Pkt. 5c., oz. 10c.

## DANDELION.

This is fast becoming one of the most popular spring vegetables and a money maker for the market-gardener, being so easily cultivated.

**Large Thick-Leaved.** The best and largest grower. Pkt. 5 cts., oz. 25 cts.

## CHICORY.

Fine for salads. To blanch it, turn a box or tub over it; the leaf-stems will then be white, of a crisp, delicate flavor.

**Large-Rooted Magdeburg.** The best. Pkt. 5 cts., oz. 25 cts.

## ENDIVE.

For early supply sow in April; for main-crop sow in June or July, in rows 1 foot apart. Thin out to 9 inches between the plants. When the plants are fully grown gather the leaves together and tie them round at the top to blanch the inner leaves. This is a fine winter salad.

*One ounce will sow about 120 feet of row.*

**Green Curled.** Very fine flavor. Pkt. 5 cts., oz. 20 cts.

**White Curled.** Blanches very easily, exquisite delicate flavor. Pkt. 5 cts., oz. 20c.

## EGGPLANT.

Sow in April in greenhouse or hotbed; transplant into boxes or pot off singly into good rich soil. Plant out in open ground in June, 2½ to 3 feet apart.

*One ounce will raise about 1,000 plants.*

**Improved New York Spineless.** The best variety grown. Pkt. 5 cts., oz. 30 cts.

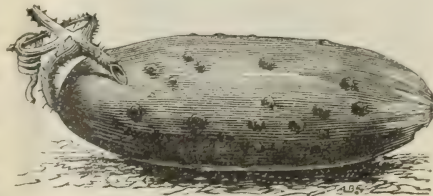
**EGGPLANTS** at the proper season, 20 cts. per doz., \$1.25 per 100.

## KALE, CURLED (Borecole).

Give same treatment as cabbage.

**Dwarf Green Curled.** The best. Early frost improves quality. Pkt. 5 cts., oz 10 cts.

**Superb Variegated.** Very ornamental; excellent for garnishing. Pkt. 10c., oz. 20c.



White Spine Cucumber.



**KOHLRABI.**

Sow seed in May or June in rows 18 inches apart, thinning out to 8 or 9 inches between plants. Culture about same as for Turnips.

*One ounce will sow about 150 feet.*

**Improved Early White Vienna.** White, tender, of excellent quality. Pkt. 5c., oz. 15c.

**LEEK.**

Sow as early as possible in spring, in drills about a foot apart. When about 6 inches high transplant into rich soil in trenches and earth up as the plants grow, to blanch them.

*One ounce will produce about 1,000 plants.*

**Large Musselburgh.** The largest grower; mild-flavored. Pkt. 5 cts., oz. 15 cts.

**Improved American Flag.** Very large and productive. Pkt. 5 cts., oz. 15 cts.

**Monstrous.** Large and superior to any other sort. Pkt. 5 cts., oz. 15 cts.

**LETTUCE.**

For winter use sow in September and transplant into coldframes when large enough to handle. Sow again in hotbeds in February for early spring use. For main crop sow in April and successively every 3 weeks until August. Sow in rows a foot apart and thin out the same distance between the plants.

*One ounce will produce between 2,000 and 3,000 plants.*

**Early Curled Simpson.** A superior sort. Pkt. 5 cts., oz. 15 cts.

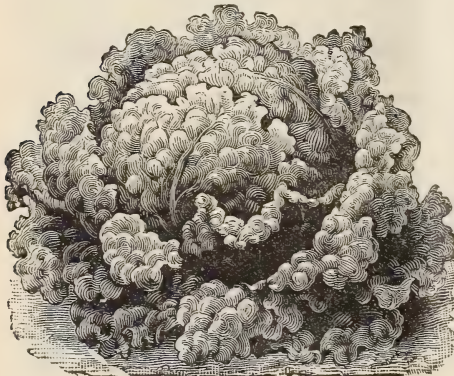
**Improved Hanson.** Large heads of good quality. Pkt. 5 cts., oz. 15 cts.

**Early Prize Head.** Large, loose heads; edge of leaves tinged brown. Pkt. 5c., oz. 15c.

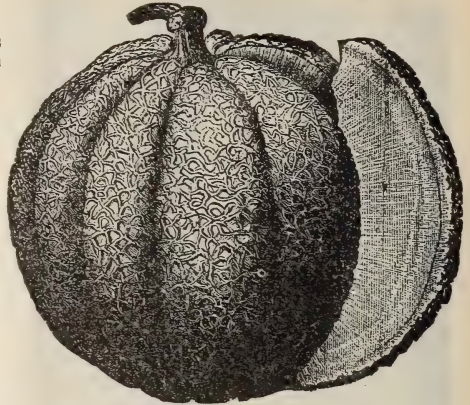
**Boston Market, Extra Selected Stock.** This is procured from one of the best known growers for the Boston market. It is the best Lettuce grown. Pkt. 5 cts., oz. 25 cts.

**All the Year Round.** A very fine Lettuce; good in quality, with large heads. Pkt. 5 cts., oz. 15 cts.

**Grand Rapids.** A well-known variety among market-gardeners. Pkt. 5c., oz. 15c.



Boston Market Lettuce.



Extra-Early Hackensack.

**MUSKMELON, or CANTALOUPE.**

Give much the same treatment as the cucumber, but the hills should be planted a little further apart and the ends of the leading shoots pinched to cause early fruiting.

*One ounce will sow over 50 hills.*

**Golden Jenny, or Netted Gem.** One of the earliest; flesh rich and luscious. Pkt. 5 cts., oz. 15 cts.

**Paul Rose.** This is said to be the best of all; great cropper, rich and juicy. Pkt. 5 cts., oz. 15 cts.

**Extra-Early Hackensack.** A very popular sort; large, round, fine-flavored. Pkt. 5 cts., oz. 15 cts.

**Montreal Market.** Largest of all; round, netted skin; when well grown reaches 20 lbs. in weight; finest possible flavor. Pkt. 5 cts., oz. 15 cts.

**WATERMELONS.**

Treat the same as cantaloupes, but plant the hills twice the distance apart.

*One ounce for about 30 hills.*

**Improved Kolb's Gem.** Early and heavy cropper; good quality. Pkt. 5 cts., oz. 15 cts.

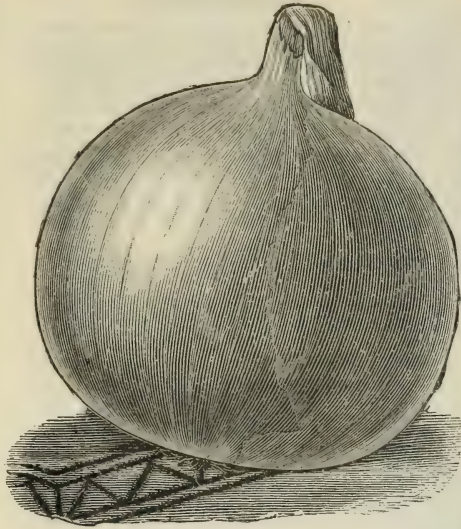
**Peerless.** A fine variety of good quality. Pkt. 5 cts., oz. 15 cts.

**Improved Ice Cream.** This is the best home market melon, immense cropper; of unsurpassed quality and rich flavor. Pkt. 5 cts., oz. 15 cts.

**Mammoth Ironclad.** Immense, and of good quality; the best variety for shipping purposes. Pkt. 5 cts., oz. 15 cts.

**MUSTARD.**

**White.** A fine adjunct with curled cress as an early salad, sow thick in drills, and cut in seed leaf. Pkt. 5 cts., oz. 10 cts.



Yellow Globe Danvers Onion.

## ONIONS.

Thrive best in a rich, loamy soil. The ground should be prepared in the autumn, plowed or spaded deep and given a heavy dressing of good rotten manure. Work the ground again in spring, pulverizing well. Sow the seed in drills 1 foot apart. When the young plants are strong enough, thin to 4 inches apart, and keep them clear from weeds without injuring the roots. Great care in weeding is necessary for a good crop. The stock of seed is procured entirely from the best and most reliable Eastern growers. To crop for Sets, sow in drills, 30 pounds per acre. A top-dressing of nitrate of soda will be found very beneficial when the crop begins forming bulbs.

*One ounce will sow a row nearly 100 feet long.  
6 pounds required per acre.*

**Large Red Wethersfield.** A fine main-crop variety. Pkt. 5 cts., oz. 15 cts.

**Yellow Globe Danvers.** An excellent sort and heavy cropper. Pkt. 5 cts., oz. 15 cts.

**Silver Skin.** Early and a fine pickling variety. Pkt. 5 cts., oz. 25 cts.

**ONION SETS** of the above sorts, qt. 25 cts., pk. \$1.50.

The prices of Onion Sets vary. These prices are subject to fluctuations of the market.

## OKRA.

Sow about middle of May, in drills 3 feet apart. When large enough thin out 9 to 12 inches between plants. Give good rich garden soil. The pods, when young, are excellent for flavoring soups.

**Dwarf Green.** Early; an excellent variety; very productive. Pkt. 5 cts., oz. 25 cts.

## PEAS.

Wrinkled sorts marked (W).

Peas delight in a good rich soil; for the dwarf kinds the soil can hardly be too rich. For market crop sow 2 to 3 feet apart in the rows, according to the height they grow. Sow the Extra-Earlies as early in March as the ground can be worked. The Wrinkled sorts should not be sown until the last of April, as they are more tender and liable to rot. Sowings for succession should be made every 2 weeks until August, then the Earlies may be sown again for a fall crop. For private gardens the tall-growing sorts should be staked with bush sticks, or a wire trellis used to keep them off the ground.

*One quart will sow a row about 100 feet long.*

**Alaska.** Said to be the earliest of all; fine quality; height 2 feet. Pkt. 5 cts., pt. 15c.

**Earliest of All.** A good variety and a great cropper; height 2 feet. Pkt. 5c., pt. 15c.

**American Wonder (W).** Dwarf; excellent quality; 1 foot. Pkt. 5 cts., pt. 15 cts.

**Little Gem (W).** Excellent quality; good cropper; height 1 foot. Pkt. 5 cts., pt. 15c.

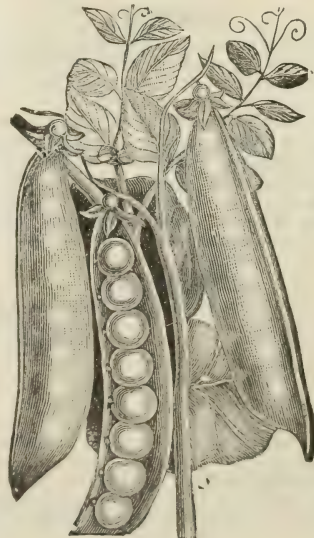
## MEDIUM EARLY AND MAIN-CROP VARIETIES.

**Advancer (W).** Very prolific; large and excellent quality; height 2½ feet. Pkt. 5c., pt. 15 cts.

**Stratagem (W).** Specially fine; most highly recommended; height 2 feet. Pkt. 10 cts., pt. 20 cts.

**Champion of England (W).** One of the best main-crop Peas; height 4 feet. Pkt. 5 cts., pt. 15 cts.

**Black-Eyed Marrowfat.** Late variety; height 4½ feet. Pkt. 5 cts., pt. 10 cts.



Alaska Peas.





Turnip-Rooted Radish.

**PARSLEY.**

Sow in drills in April and when large enough transplant to about 9 inches apart. This process improves them and makes the leaves extra curly. Soak the seed a few hours before sowing.

*One ounce will sow a row over 100 feet long.*

**Extra Double Moss Curled.** The best variety. Pkt. 5 cts., oz. 15 cts.

**PARSNIPS.**

Sow last of April or beginning of May. The ground should be cultivated as deep as possible and well enriched. Sow in drills 15 inches apart and when large enough thin out to 8 inches between the plants. They are greatly improved in flavor by the early frosts. Perfectly hardy.

*One ounce will sow a row 150 feet long.*

**Hollow-Crowned.** A good old variety. Pkt. 5 cts., oz. 10 cts.

**The Student.** An excellent variety, smooth-growing and sweet. Pkt. 5c., oz. 10c.

**PEPPERS.**

Sow early in April under glass and transplant in the open ground about June, about 18 inches apart. Seed may also be sown in the open ground the last of May.

*One ounce will sow a row 100 yards long.*

**Bell, or Bull Nose.** A large early variety; fine for pickling. Pkt. 5 cts., oz. 20 cts.

**Golden Dawn.** Sweet, golden yellow, not at all pungent; excellent. Pkt. 5c., oz. 20c.

**Ruby King.** Extra large, red, mild in flavor. One of the best. Pkt. 5c., oz. 25c.

**PUMPKINS.**

Usually planted in corn fields or among potatoes. If planted by themselves give plenty of room, 10 feet apart at least. Sow early in May in rich ground.

*One ounce to about 20 hills.*

**Connecticut Field.** A good variety. Pkt. 5 cts., oz. 10 cts.

**Small Sugar.** Rather small, but exceedingly rich. Pkt. 5 cts., oz. 10 cts.

**Mammoth Prize.** Has been grown to nearly 200 lbs. weight. Flesh fine-grained, excellent. A splendid keeper. Pkt. 5 cts., oz. 15 cts.

**RADISHES.**

A light rich garden soil is the proper thing for growing good Radishes. Sow in open ground from middle of March to September. For early use sow in hotbeds in February, giving plenty of air or they will run to leaves

*One ounce will sow a row about 100 feet long.*

**Long Scarlet Short-Top.** A fine main-crop variety. Pkt. 5 cts., oz. 10 cts., lb. 75c.

**French Breakfast.** Early; one of the best early; forces well; good flavor. Pkt. 5 cts., oz. 10 cts., lb. 75 cts.

**Lady Finger.** Good early variety; mild in flavor. Pkt. 5 cts., oz. 10 cts., lb. 75 cts.

**Turnip-Rooted Red and White.** Both favorite varieties. Pkt. 5 cts., oz. 10 cts., lb. 75 cts.

**White Strasburg.** Early summer Radish. Pkt. 5 cts., oz. 10 cts., lb. 75 cts.

**SPINACH.**

This requires a rich soil. Sow from April to September at intervals of about 3 weeks. The last sowings may be protected from winter frosts by shaking some light stable manure over them.

*One ounce for about 100 feet of drill.*

**Bloomsdale, or Savoy-Leaved.** The greatest cropper. Pkt. 5 cts., oz. 10 cts., lb. 35 cts.

**Monstrous Long-Standing.** Thick leaves, dark green. Pkt. 5 cts., oz. 10 cts., lb. 35 cts.

**SQUASHES.**

Give same treatment as cucumbers and melons.

**Golden Summer Crookneck.** A good variety. Pkt. 5 cts., oz. 10 cts.

**Hubbard Improved.** Large and fine; excellent quality. Pkt. 5 cts., oz. 10 cts.

**Golden Custard.** Large, of fine quality; very productive. Pkt. 5 cts., oz. 10 cts.

**SALSIFY (OYSTER PLANT).**

Sow in April or May in rich, deeply cultivated ground, in rows about 18 inches apart. When large enough thin out to 6 inches between plants.

*One ounce will sow 50 feet.*

**Mammoth Sandwich Island, Selected Stock.** The best of all. Pkt. 5c., oz. 15c.



White Bush Squash.

## TOMATOES.

Sow in hotbeds, or in boxes in greenhouse the early part of March. When large enough prick off into boxes in good soil and keep near glass, so they will not get long weak stems. Plant out from middle to last of May into as rich ground as possible. Plant about 4 feet apart.

*One ounce will produce about 1,000 plants.*

**Stone.** A very good variety. Pkt. 5 cts., oz. 25 cts.

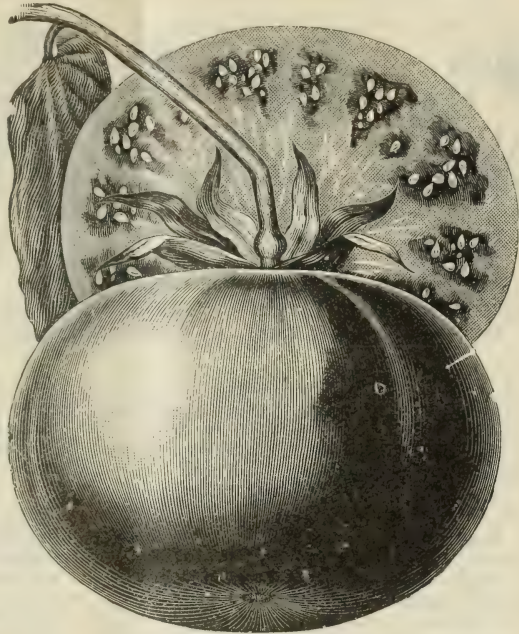
**Dwarf Champion.** Very distinct variety; its compact form of growth enables it to be planted much closer than any other sort. The fruit is of fine quality and size; very prolific bearer. Pkt. 5 cts., oz. 25 cts.

**Beefsteak.** A well-known variety. Pkt. 5 cts., oz. 15 cts.

**Atlantic Prize.** Good for main-crop; very early. Pkt. 5c., oz. 15c.

**Livingston's Beauty.** Fine main-cropper; very prolific; good shipper. Pkt. 5 cts., oz. 15 cts.

**TOMATO PLANTS.** Doz. 10 cts., 100 65 cts.



Livingston's Beauty Tomato.

**Purple-Top White Globe.** A very fine variety. Pkt. 5 cts., oz. 10 cts., lb. 40 cts.

**Early White Dutch.** Very quick-growing; best for early sowing. Pkt. 5 cts., oz. 10 cts., lb. 40 cts.

**Golden Ball.** Yellow flesh; excellent quality; fine for market. Pkt. 5 cts., oz. 10 cts., lb. 40 cts.

**Yellow Tankard.** Excellent winter sort; splendid quality. Pkt. 5c., oz. 10c., lb. 40c.

**RUTABAGA, etc.** See Agricultural Seeds.

## TURNIPS.

Sow as early in spring as the ground can be worked. For winter crop sow middle of July. I favor sowing in drills 18 inches apart and when large enough thinning to 9 inches between plants. A large weight per acre can be grown in this way; the crop is much more easy of cultivation, and good cultivation is the secret to all root crops.

*One ounce will sow nearly 150 feet of row.*

**Purple-Top Strap-Leaf.** Good cropper. Pkt. 5 cts., oz. 10 cts., lb. 40 cts.



Purple-Top Strap-Leaf Turnip.

## HERBS.

Invaluable for culinary purposes; no garden is complete without them. Sow as early in the spring as the weather becomes warm, and thin out as the plants grow. When in full vigor, or just as they begin to show flower, cut, tie in bunches and hang in a dry, airy place. When thoroughly dried, roll in paper and put away for future requirements.

**Balm.** An invaluable herb. Pkt. 5 cts., oz. 20 cts.

**Basil, Sweet.** The leaves are used for soups and salads. Pkt. 5 cts., oz. 20 cts.

**Chervil, Curled.** Excellent for salads or garnishing purposes. Pkt. 5 cts., oz. 20 cts.

**Fennel.** Used for boiling with, and flavoring fish saucers. Pkt. 5 cts., oz. 10 cts.

**Morehound.** This plant has great medicinal properties. Pkt. 5 cts., oz. 20 cts.

**Hyssop.** Hyssop tea, or a spray or two boiled in cider is good for colds. Pkt. 5 cts., oz. 20 cts.





Sweet Basil.



Sage.



Sweet Marjoram.



Summer Savory.



Thyme.

**HERBS, continued.**

**Lavender.** Grown chiefly for its perfume, "Lavender Water." Pkt. 5 cts., oz. 20 cts.

**Marjoram, Sweet.** Largely used in the culinary art. Pkt. 5 cts., oz. 15 cts.

**Rosemary.** A useful Herb. Pkt. 5 cts., oz. 25 cts.

**Rue.** Medicinal Herb, specially good for chickens with the crop. Pkt. 5c., oz. 15c.

**Sage, Mammoth Broad-Leaved.** The most prominent of all the Herbs. Pkt. 5 cts., oz. 15 cts.

**Summer Savory.** Used in salads and many other flavorings. Pkt. 5 cts., oz. 10 cts.

**Thyme.** A very useful Herb of fine delicate flavor. Pkt. 5 cts., oz. 20 cts.

**Tarragon.** In great demand, valued for its aromatic leaves, for salads, etc., also for Tarragon Vinegar. Pkt. 25 cts., oz. \$1.

**ROOTS.**

**Asparagus Plants.** See Vegetable Seeds.

**Horse-Radish.** 100 roots \$1, doz. 20 cts.

**Rhubarb, or Pie Plant.** Planted in spring and well manured will give a good crop following season. Doz. \$1.50, 100 \$8.

**POTATOES.** All varieties at Market prices.

**Agricultural Seeds.****SEEDS FOR THE FARMER.****FIELD CORN.**

Corn for ensilage purposes should be a matter of great consideration with the farmer, for thereon depends the mainstay of sustenance for his stock. Many sow without a thought the ordinary Yellow Field Corn for this purpose, because it is handy and cheaper. The thoughtful farmer will consider the quality and quantity of the product as of the first importance, and not let the small cost stand in his way to procure the best variety of seed on the market, for the result of his crop will be so much to his advantage in quality if the better class seed is sown, and the quantity will be also noticed as a long way ahead of the ordinary corn. Three or four of the best kinds are enumerated, but as the

prices fluctuate so much I would rather quote them at the time the seed is required.

**Red Cob Ensilage Corn.** This is superior also as a fodder; sweet and juicy; a heavy cropper, very nutritious. Pk. 50c., bus. \$1.50.

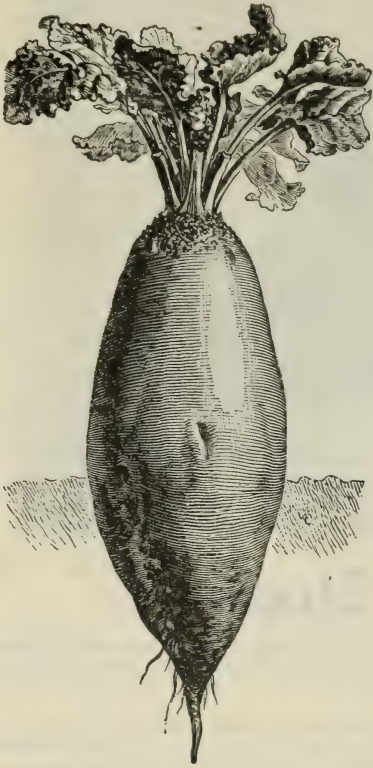
**Blunt's Prolific Ensilage Corn.** A valuable sort, yields the largest tonnage of any. A most nutritious forage to use green, or pack in the silo. Pk. 75 cts., bus. \$2.

**Sweet Fodder Corn.** Good for green fodder, or ensilage. Pk. 50 cts., bus. \$1.75.

**Southern Horse-Tooth Ensilage Corn.** A sort every silo owner should plant, yields an immense crop of green fodder with broad foliage and tender, sweet stalks. Pk. 50 cts., bus. \$1.75.

Subject to variations in the market.





Illinois Leviathan Mangel Wurzel.

**MANGEL-WURZEL.**

This root crop is invaluable to the farmer, and if once given a fair substantial trial would become part and parcel of his regular crop. All stock are ravenous after it. The best kinds produce immense crops of 75 tons per acre; over one hundred tons per acre have been produced under good cultivation.

**Illinois Leviathan.** Good quality; an immense cropper. Lb. 50 cts., 5-lb. lots \$2.

**Mammoth Long Red.** Enormously productive. Lb. 30 cts., 5-lb. lots \$1.25.

**Champion Yellow Globe.** Very nutritious and productive. Lb. 30 cts., 5-lb. lots \$1.25.

**SUGAR BEET.**

The following varieties have been selected with careful consideration, as the very best for this crop, being exceedingly rich in sugar according to analysis, and the heaviest cropper. Rich, deeply cultivated soil is necessary for heavy crop.

**Vilmorin's Imperial.** One of the best; yielding an average of 15 tons per acre. Lb. 35 cts., 5-lb. lots \$1.50.

**Lane's Improved.** A good variety and great cropper. Lb. 30 cts., 5-lb. lots \$1.25.

**French Red Top.** Combines all the good qualities. Lb. 30 cts., 5-lb. lots \$1.25.

**Klein-Wanzleben Improved. Selected Stock.** This is the best of all sugar-producing Beets. According to analysis it produces more sugar than any other variety and grows the greatest weight per acre. Per lb. 35 cts., 5 lb. lots \$1.50.

**RUTABAGA, or SWEDISH TURNIPS.**

A great root-crop for fattening all kinds of stock for the winter months.

**Long Island Improved Purple Top.** Good quality and immense cropper. Per lb. 50 cts.

**Sutton's Champion.** A fine, clean-growing sort and good cropper. Per lb. 40 cts.

**DWARF ESSEX RAPE.**

A bonanza to the sheep farmer for fall pasturing. Of very rapid growth. In fattening properties it is twice as good as clover, and exceeds all other forage for putting the stock in excellent condition for the market, without grain or other additional food. If sown in drills 18 inches apart, 3 pounds per acre is sufficient; if broadcast sow 6 pounds per acre; should be sown in August for fall feeding. Per lb. 10 cts.

**WINTER VETCH, or TARE.**

A new forage plant that succeeds well on sandy or light soils, resisting heat or cold. Sown in the fall it yields a great spring crop, which, if cut when coming into flower, is most excellent for horses or any kind of stock. It will yield a second crop, which may be cut or let stand to seed if desired. Sow 1 bushel to the acre, with about the same quantity of rye or wheat for a support to keep it standing. Subject to market values.

For **CLOVERS** and **GRASS SEEDS** see front part of Catalogue.



Dwarf Essex Rape.





## Nursery Stock.

J. C. Murray wishes to inform his patrons and the public, that all his stocks of trees have been selected with great care, from the best growers, regardless of cost. They are all true to name, and contain only fine healthy trees.

### APPLES.

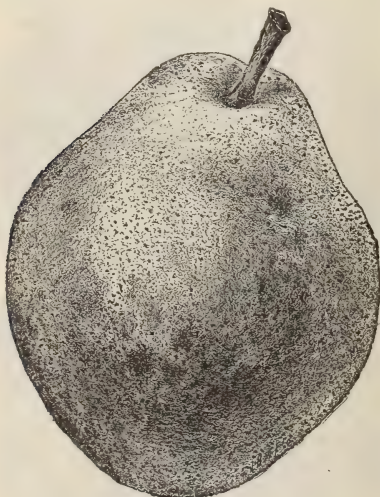
**Standards for Orchards, extra fine stock, in varieties.**

**Summer Sorts.** Early Harvest, Carolina Red, Yellow Transparent, Red Astrachan, Early Strawberry.

**Autumn Sorts.** Alexander, Duchess of Oldenburg, Gravenstein, Rambo, Maiden's Blush, Red Beitigheimer, Golden Sweet.

**Winter Sorts.** Baldwin, Ben Davis, Fallwater, Golden Russet, Jonathan, King, Northern Spy, Rawle's Janet, Boiken, Rhode Island Greening, Flory's Bellefleur, Northwest Greening, Twenty-Ounce, Winesap, Gideon, Stark, Arkansas Black, Scott's Winter, Wealthy, Hubbardston.

**Crab Apples.** For ornament and preserving. Hyslop, Martha, Whitney, Transcendent.



Kieffer Pear.

### PEARS.

**Standards for Orchards.** Extra fine stock, in varieties. Bartlett, Clapp's Favorite, Duchesse d'Angouleme, Lawson, Howell, Kieffer, Seckel, Margaret, Sheldon, Lawrence, Beurre Bosc, Louis Bonne de Jersey.

### CHERRIES.

**Standards.** Extra fine stock, in varieties. Allen, Governor Wood, Early Richmond, May Duke, Windsor, Large Montmorency, English Morello.

### PLUMS.

**Standards.** Extra fine stock, in varieties. Bavay's Green Gage, Imperial Gage, Lombard, Mary, Empire, Shropshire Damson, Abundance, Burbank, Wickson.

Standard Apples, Pears, Cherries, Plums. 50c. each, \$5 per doz., \$35 per 100.

**PEACHES.**

Bokara No. 3, Miller's Cling, Crawford Early, Kalamazoo, and many other leading kinds. The sorts mentioned thrive best in this state. Good strong trees, 25 cts. each.

**APRICOTS.**

Moorpark and Superb. Two of the best. 25 cts. each.

**QUINCES.**

Champion, Orange, and Rea's Mammoth. 25 cts. each.

**GRAPES.**

Strong 2-year-olds, Concord, Moore's Early, Brighton, Woodruff, Campbell's Early (50c.), Niagara and Martha. 25 cts. each, except where priced.

**BLACKBERRIES.**

Plant in rows 5 feet apart each way for the garden, for field planting 6 feet apart in rows and 3 feet between plants.

Erie, Snyder, Taylor and Wilson. 10 cts. each, 60 cts. per doz.

**LUCRETIA DEWBERRY.**

The best trailing Blackberry. 10 cts. each, 60 cts. per doz.

**RASPBERRIES.**

To keep a planting in good condition, it is essential to prune every spring, cutting out all old and weak wood. Manure heavily and dig in. Bonemeal is a good manure. Plant early in fall or spring.

**Black Sorts.** Gregg, Kansas, Cumberland and Eureka.

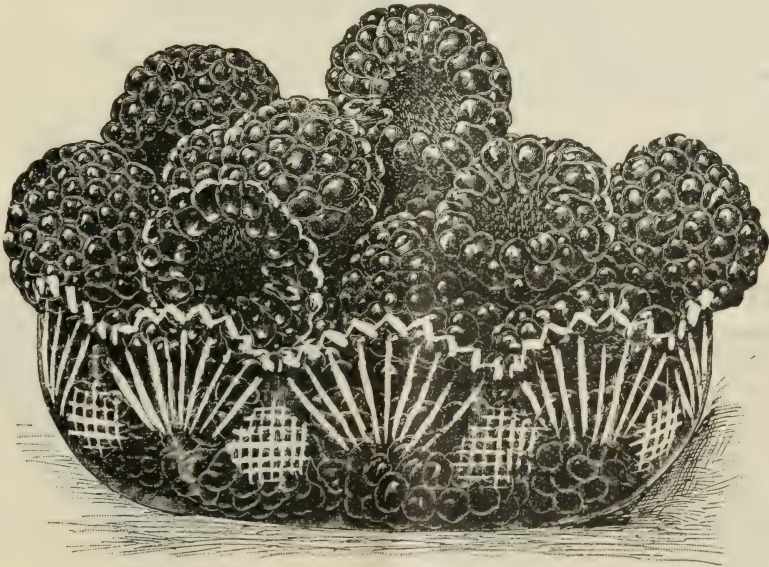


Bokara Peach.

**Best Red Sorts.** Cuthbert, Marlboro, Miller's Red and Superlative. The last is the best of all. Fruit very large, fine color, firm and of excellent flavor; a good shipper. It has been thoroughly tested and the report in all cases is that it has come to stay. \$1.50 per doz.

**Yellow.** Golden Queen. Fine fruit.

**Strong plants,** 10 cts. each, 60 cts. per doz., except where priced.



A Dish of Cumberland Raspberries.





Cherry Red Currants.

### CURRANTS.

**The Best Red Sorts.** Fay's Prolific, Victoria, Cherry Red and Wilder, the best of all. 20 cts. each.

**Best White Sort.** White Grape.

**Best Black Sorts.** Lee's Prolific and Black Champion.

**Strong plants,** \$1.50 per doz., except where priced.

### GOOSEBERRIES.

Rich cultivation is required annually and spring pruning is necessary to produce fine fruit. The American sorts require more pruning than the English varieties. When the fruit is swelling a good top-dressing will be beneficial and watering in very dry weather.

**Best American Sorts.** Columbus (very large), Downing, Houghton's and Smith's Improved.

**Strong plants,** 15 cts. each, \$1.50 per doz.

**English Sorts.** Crown Bob, Industry, Whitesmith, Lancashire Lad and Keepsake. These all have extra large fruit and are great croppers.

**Strong plants,** 25 cts. each, \$2.50 per doz.

### STRAWBERRY PLANTS.

**Directions for Culture.** This is an essential fruit in all gardens. Previous to planting the ground should be well cultivated and well manured. Wet or very damp situations should be avoided unless thoroughly drained. The best time for planting is late in August or early in September. Pot-plants are more sure and satisfactory than field plants, even if they do cost a little more. Plant in rows in the garden 3 feet apart and 15 inches between plants. Keep the ground clean from weeds. A thick dressing of rotten manure should be given in the fall for protection in winter months; this may be dug in

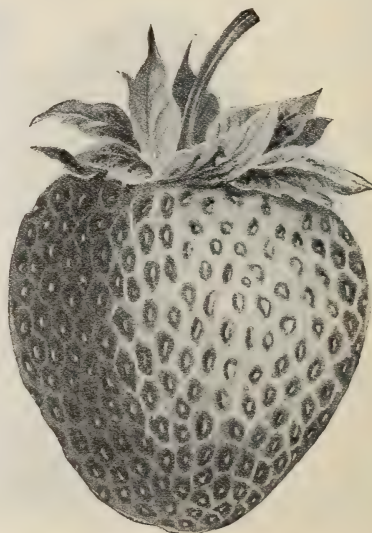
with a garden fork in the spring. As the runners appear keep them pinched off. After flowering mulch well with green grass cut from the lawn or elsewhere; this will keep the roots cool, aid the growth of the fruit and keep it clean from sand when ripe. It will also lengthen the fruiting season.

*Number of plants required per acre, 3 feet by 1 foot apart, 14,500.*

**Best Varieties.** Brandywine, Bismarck, Lovett, Marshall (an excellent sort), Sharpless, Eclipse and Gandy.

**Field-grown plants,** strong, 75 cts. per 100; special rates per 1,000

**Pot-grown plants.** In July special prices on application.



Marshall Strawberry.



Norway Maples.

## ORNAMENTAL SHADE TREES.

Ash, Elms, Maples (in great variety), Poplars, Honey Locust, Catalpas, Lindens (American and European), Tulip Tree, European Sycamore, Horse Chestnut, Kentucky Coffee Tree, etc.

A large variety of all the above in stock; transplanted trees, with good fibrous roots and well grown, to suit the most fastidious customer.

Prices: From 75 cts. to \$1.50 each and upwards. Special prices for quantities on application.

## ORNAMENTAL AND FLOWERING TREES AND SHRUBS.

Beech (in all varieties), Birch (in variety), Cornus florida, Deciduous Cypress, Magnolias (in variety), Judas Tree, Euonymus, Double-Flowering Peach, Mountain Ash, Salisburia (Maidenhair Tree), Sophora Japonica, European Larch, Virgilia lutea, etc., etc.

Prices vary from 50 cts. to \$1.50 each and upwards.

## TREES OF PENDULOUS OR WEEPING GROWTH.

Ash, Beech, Birch, Dogwood, Mountain Ash, Camperdown Elm, Mulberry, Kilmarnock Willow, American Weeping Willow, etc., etc.

Prices vary from 50 cts. to \$1.50 each and upwards.





*Hydrangea paniculata grandiflora.*

## DECIDUOUS FLOWERING SHRUBS.

**Azaleas Mollis** and **Ghent**, **Double-Flowering Almonds**, **Clethra alnifolia**, **Deutzias** (in variety), **Japan Quince**, **Calycanthus** or **Allspice Shrub**, **Daphne**, **Desmodium penduliflorum**, **Diervilla** or **Weigelia** (in great variety), **Eleagnus** (very choice, fine fruit), **Exochorda**, **Forsythias** (in variety; a very showy early-flowering shrub), **Hibiscus** or **Althea** (in variety), **Kerria Japonica**, **Hydrangea paniculata grandiflora**, **Philadelphus** or **Mock Orange**, **Prunus** (in variety), **Syringa** or **Lilac** (in variety), **Ribes** (American Currant), **Sambucus** or **Elder**, **Spirea** (in great variety), **Viburnum plicatum** and other sorts, **Berberis**, etc., etc.

Good strong plants of any of the above sorts, from 50 cts. to \$1 each.

By careful selection a continuance of bloom can be produced from early spring until late in fall. Consult us about this.

## EVERGREEN TREES AND SHRUBS.

**Arbor-Vitæ** (in all varieties), **Silver Firs** (in variety), **Junipers** (in variety), **Pinus** (in great variety), **Retinosporas** (in sorts), **Norway Spruce**, **Colorado Blue Spruce**, **Hemlock Spruce** and many other sorts varying in price from 50 cts. to \$2 and upwards, according to variety and size.

## PLANTS SUITABLE FOR HEDGES.

**Osage Orange**, **Honey Locust**, **California Privet**, **Pyrus Japonica**, **Common and Purple-Leaved Berberis**, **Berberis Thunbergii** (this is a gem for a dwarf hedge or dividing line. It has beautiful green foliage, changing to various shades of red in fall, and covered with a profusion of bright scarlet berries).

Prices of Hedge Plants vary from \$1 to \$10 per 100 and upwards, according to sort and size of plant. Consult us.



Coquette des Blanches.

## Roses.

### HYBRID PERPETUAL, or HARDY ROSES.

The following list will be found to contain only first-class sorts:

Mad. Plantier, Magna Charta, Abel Carrière, Alfred Colomb, John Hopper, Anne de Diesbach, Baroness Rothschild, General Jacqueminot, Gabriel Luizet, Mabel Morrison, Louis Van Houtte, Marshall P. Wilder, Paul Neyron, Crimson Queen, Dinsmore, Ulrich Brunner, Coquette des Blanches, La France, Mrs. John Laing and many other varieties too numerous to list at present.

Strong outdoor dormant plants, 2 yrs., 25 cts. to 50 cts. each, \$3.50 per doz.

### CLIMBING, or PILLAR SORTS.

Baltimore Belle, Prairie Queen, Gem of the Prairies, Crimson Rambler, Climbing Jules Margottin, Climbing Victor Verdier, Jackson Dawson. Prices same as above.

PEORIA, ILL., Dec. 21, 1900.

It affords me pleasure to say that I have known Mr. James C. Murray, Florist, of this city, a number of years, and have had occasion to place orders with him for the city and also have had the pleasure of patronizing him as a private citizen, and have found him prompt, trustworthy and progressive.

Respectfully yours,

HENRY W. LYNCH, Mayor.





A Bowl of Multiflora Roses.

## HARDY ROSES SUITABLE FOR DECORATING PARKS, CEMETERIES, ETC.

**Rugosa alba and rubra.** This is a truly choice and effective hardy Rose of Japanese origin. Foliage very dense, broad, handsomely ribbed, of a beautiful dark green. Flowers large, single, followed by a profusion of scarlet berries.

**Rugosa Mad. G. Bruant.** A new race; flowers semi-double, pure white and very fragrant; flowers all summer long; hardy.

**Multiflora.** Very effective for park planting and cemeteries.

**Wichuraiana.** A very distinct new Chinese type; perfectly hardy; of trailing habit; grows as close to the ground as *Vinca minor*. It is of very rapid growth, quickly covering the ground with a complete mass of very deep glossy green leathery foliage. Commences to flower in July and continues with profusion until late in fall. Flowers creamy white, single, intensely fragrant, indispensable for parks, cemeteries, for rockwork and other effects.

**Clothilde Soupert.** Half-hardy; fine as a summer bedding Rose. Very double, pearly white, shaded deep pink in center; very profuse bloomer, lasting all summer. Fine for florists as a pot-plant.

Strong plants of the above, 25 cts. to 50 cts. each, \$3.50 per doz. Special quotations by the 100.

## CHOICE HERBACEOUS PLANTS.

The fine summer-flowering decorative plants are very numerous and I find I am unable to devote space in this Catalogue to enumerate this class as it ought to be, but to any of my customers requiring a collection I shall be pleased to submit a written list and quote prices on application. As a guide for my customers would say that I can supply a very fine variety at from \$2 to \$3 per doz., my selection.



Varieties of Clematis.

## CLIMBING PLANTS.

**AMPELOPSIS Veitchii** (Boston Ivy). Fine to plant around churches and blank walls, also around dwellings. 20 cts. each, \$2 per doz.

**BIGNONIA radicans** (Trumpet Vine). A fast grower and profuse flowering. 25 cts. to 50 cts. each.

**CLEMATIS, Hybrid Varieties.** All the best and well known kinds. Strong, 3-year plants, 75 cts. to \$1 each.

*paniculata*. A hardy variety of extremely rapid growth. The flowers are white and very fragrant, produced in such profusion as to make the plant a complete sheet of white. Strong plants, 25c. to 50 cts. each.

**EUONYMUS radicans** and *radicans variegata*. Useful for park and cemetery planting and for rockwork. Good plants, 25 cts. and 50 cts. each.

**LONICERA** (Honeysuckle), *Halleana*, *sempervirens*, *aurea reticulata*. All very fine climbing plants. 25 cts. each.

**PERIPLOCA Græca** (Silk Vine). Immense grower, 30 feet in a season; leaves large, bright shiny green. 25 cts. each.

**WISTARIA Chinensis.** Handsome climber; flowers are borne in racemes a foot long and in clusters of pale blue or lilac; will give a good second crop if summer pruned. Strong plants, 75 cts. each.

*Chinensis alba*. Like the above, but flowers white. Strong plants, 75 cts. each.



Honeysuckle.





Kentia Belmoreana.

## Stove and Greenhouse Decorative Plants.

A visit to my greenhouses will show the large and varied stock of decorative plants, which can be had at all prices to suit the most fastidious purchaser.

Palms, in all varieties and sizes.

Azaleas, in great variety.

Poinsettia pulcherrima, Ficus elastica (Rubber Plant).

Ferns, in very great variety, including the well-known Boston Fern (*Nephrolepis exaltata Bostoniensis*), all sizes and all prices.

Pandanus Veitchii (fine plants).

Pandanus Utilis, Spireas, Easter Lilies, Japan Lilies. A fine lot of hanging Baskets of Asparagus Sprengeri, and many other attractive varieties of plants.

Rhododendrons and Hardy Azaleas. Prices on application.

Pæonia, Moutan (Japanese Tree Pæony), quite hardy, \$1 to \$1.50 each.

Pæonia, Herbaceous Varieties. A large and good selection. Strong plants, 25 to 50 cts. each.

Phlox, Perennial. A good selection. Each, 15 to 25 cts., doz. \$2.

### CHOICE BEDDING PLANTS OF ALL KINDS.

A large and superior assortment. Inspection is invited.

### PANSY PLANTS.

A very choice assortment. This gorgeous early spring flower should most justly be heralded the "Pride of the Spring," for there is no other flower comes so early, and remains to please most fastidious tastes with such a multitudinous array of colors so long. Fine strong plants, doz. 35 cts., 100 \$2.50. Special rate by the 1,000.

### LILY-OF-THE-VALLEY.

Strong clumps for planting in the garden. 100 \$2.50.

## Cut-Flower Department.

In this Department it has always been my aim to give the best quality and value possible for money to produce. My growers are men of tried and successful experience. The quality of my Roses,—American Beauties, Brides, Bridesmaids, and other varieties,—together with my Carnations, will bear the closest inspection, and maintain my reputation for high-class flowers.

**Funeral Designs** of all kinds are made up artistically, and the increasing demand which I am receiving speaks volumes for the work done. I especially invite inquiry from all organizations and the various subordinate lodges, to this class of work, which it is my aim to specially cater to, both as regards high-class work, and at such prices that cannot fail to meet the approbation of all. **Decorative Designs** in other floral work, for all occasions, are executed with artistic taste and despatch. Before ordering elsewhere, come and get ideas and prices from "Murray, the Florist."

In ordering Designs it is essentially necessary to give the order as early as possible before the work is wanted, to ensure well-made and artistic work. If required at short notice telegraph order, or better still, telephone. My number is 751, for the store, and 6, for the greenhouses, where I can be reached either day or night.

**NOTICE:** I make a specialty of delivering Cut-Flowers, Plants and Seeds, securely packed for shipping any distance at all seasons, anywhere in the U. S. with promptness and despatch, and can guarantee safe delivery of same. My facilities in this department are unsurpassed, and my prices are very reasonable.

My prices range very moderate throughout the year, excepting during the holiday seasons, when the supply never equals the demand, and prices consequently are much higher at Christmas, New Year, Easter, Decoration Day, and Thanksgiving Day. To guard against disappointment it is necessary to place your order early.



### LIST OF A FEW DESIGNS AND PRICES.

Anchors, Crosses, Wreaths, and Bouquets, \$2.50, \$3.50, \$5 and upwards.

Pillows, Harps, Standing Crosses, etc., \$5, \$6, \$7 to \$15.

Broken Wheels, Gates Ajar, etc., \$6, \$8, \$10 to \$25.

Sheaves of Wheat (emblematic of ripened old age), from 50 cts. up to \$3.

We have a large quantity of other designs for all purposes in stock, but space will not allow enumeration.





Ornamental Vase. (See opposite page).

## POULTRY.

**Rust's Egg-Producer and Condition Powder.** Through the many solicitations of friends and acquaintances I have deemed it expedient to keep this line of goods for the benefit of the poultry raiser. I will not go into any exhaustive description here, as full instructions are given on each package. Any of my customers interested in the welfare of their poultry would do well to give these foods a study, for practically they are needed by every one keeping poultry.

**Rust's Egg-Producer.** 25 cts., 50 cts. and \$1 per package.

**Rust's Condition Powder.** 25 cts., 50 cts. and \$1 per package.

## FERTILIZERS.

**MURRAY'S LAWN ENRICHER, Special.** 5-lb. bags 25 cts., 10-lb. bags 40 cts., 50-lb. bags \$2.

**Pure Ground Bone.** 25 cts. per package. Prices for quantities on application.

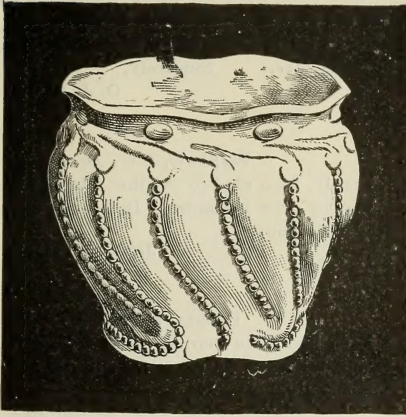
**Bone Superphosphate.** Fine for root crops. Prices on application.

**Potato Manure.** Increase your crops by using this manure. Prices on application.

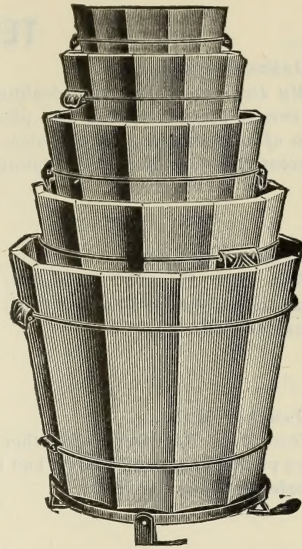
**Nitrate of Soda.** A fine stimulating top-dressing for all root crops. Use it and increase the weight per acre. Prices on application.

**Pulverized Sheep Manure.** This is a safe and valuable manure for the florist and vegetable gardener, either as a top-dressing mixed with soil or for manure water. Safe and reliable, giving marvelous results. 10-lb. bag 50 cts., 100 lbs. for \$2.

**Bowker's Food for Plants.** A fine stimulant for the home grower of plants, producing fine green foliage and a profusion of flowers. 25 cts. per package.



Ornamental Jardiniere.



Wooden Tubs.

## INSECTICIDES, ETC.

**Hammond's Slugshot.** In 5- and 10-lb. packages. 6 cts. per lb.

**Bordeaux Mixture.** The best for spraying trees attacked with caterpillars or other insects. One gallon makes 50 gallons of spray. Per qt. 35 cts., \$1.25 per gal.

**Hellebore Powder.** 25 cts. per lb.

**Whale-Oil Soap.** 1-lb. boxes 20 cts.

**Paris Green.** 1-lb. package 25 cts., 5-lb. package \$1.

**Garden Hose.** 12½ cts., 15 cts., 18 cts. to 25 cts. per foot

**Rubber Sprinklers.** 50 cts. to \$1 each.

**Garden Trowels.** 25 cts. to 50 cts. each.

**Cooper's Garden Hose-Menders.** The best. 10c. each.

**Raffia for tying.** 25 cts. per lb.

## ORNAMENTAL JARDINIERS.

WITH OR WITHOUT PEDESTALS.

In this line I carry a large and varied assortment of choice goods and invite the inspection of intending purchasers. My prices will compare favorably with any other dealer in this line. Prices range from 50 cts. upwards, according to size and quality.

## ORNAMENTAL, TERRA COTTA AND RUSTIC VASES.

For lawn decorations. A large stock to select from. Prices according to size, from \$2.50 each, upwards.

## LARGE AND SMALL WOODEN TUBS.

Strongly made for the lawn or veranda, suitable for large plants or trees. Price, \$1.25 to \$3 each.



## TESTIMONIALS.

MR. JAMES C. MURRAY.

PEORIA, ILL., Dec. 26, 1900.

*My Dear Sir:* Business dealings with you and close personal acquaintance for more than twenty years make it a very pleasant duty on my part to represent you to the public as a man of highest integrity and most careful business methods, insuring confidence in your representations and honorable dealings with your customers.

Sincerely,

O. J. BAILEY.

MR. JAMES C. MURRAY.

WARSAW, ILL., Dec. 6, 1900.

*Dear Sir:* Yours of the 3d inst. at hand. In reply, I am glad to say that I have always found your cut-flowers fine and fresh after a journey of over 100 miles. It is a pleasure to do business with you.

Very truly yours,

JOHN W. MARSH.

MR. JAMES C. MURRAY.

PEORIA, ILL., Dec. 21, 1900.

*Dear Sir:* The trees and other articles I have had from you at several times have always proved very satisfactory, and I have recommended many of my friends to call and see you before buying elsewhere.

Yours truly,

JOHN VOSS, Supt. of Buildings.

MR. JAMES C. MURRAY.

FORREST, ILL., April 30, 1900.

*Dear Sir:* Please find enclosed draft for ten (\$10) dollars for payment of flowers. They were very satisfactory.

Yours truly,

A. A. STRAWN.

MR. JAMES C. MURRAY.

TOULOU, ILL., Aug. 25, 1900.

*Sir:* The flowers were received in good condition and were quite satisfactory. Enclosed you will find a Money Order for \$2.50 in payment for same. Thanking you for your prompt attention to the order, I am,

Yours respectfully,

JESSIE FLEMING.

MR. JAMES C. MURRAY.

HAVANA, ILL., July 31, 1900.

*Dear Sir:* Enclosed find \$32 in settlement of my account. Please acknowledge the same. The flowers were very nice and every one who saw them said they were the finest ever brought to town. Thanking you again for the promptness and trusting I can place many more orders with you,

I remain,

OTTO H. STOCKERT.

MR. JAMES C. MURRAY.

FARMINGTON, ILL., Jan. 3, 1901.

*Dear Sir:* I have great pleasure in testifying to the good quality of work done by you in funeral designs, etc. I have placed orders with you for several years and the result has always been satisfactory.

Yours respectfully,

A. G. MORSE.

*To the Public.*

I have handled and seen a great many floral designs made and furnished by Mr. J. C. Murray and they have always given perfect satisfaction.

J. FRANK ZIEGLER, Undertaker,  
210 Hamilton Street.*To whom it may concern.*

PEORIA, ILL., Nov. 1, 1900.

This year I bought the greatest part of my garden seeds from Mr. James C. Murray, of this city, and I have pleasure in saying the seeds purchased from him were more satisfactory than the seeds I purchased elsewhere.

JO. FRIETSCH,  
7th and Western ave.

# INDEX.

	PAGE
Agricultural Seeds . . . . .	18, 19
Bedding Plants . . . . .	28
Bulbs and Tubers, Choice . . . . .	10
Climbing Plants . . . . .	27
Everlasting Flowers, Choice . . . . .	10
Fertilizers . . . . .	29
Field Corn . . . . .	18
Flower Seeds, Choice Collections of . . . . .	2
Flower Seeds, Choice Florists' . . . . .	3-7
Flower Seeds, General Collection . . . . .	8, 9
Flowering Shrubs, Deciduous . . . . .	24
Flowering Trees and Shrubs, Ornamental . . . . .	23
Herbs . . . . .	17, 18
Herbaceous Plants, Choice . . . . .	26
Importations of Bulbs . . . . .	10
Insecticides, etc. . . . .	29
Instructions . . . . .	2d cover
Jardinières . . . . .	29
Lawn Grass Seed, Murray's "Velvet Turf" . . . . .	1
Lily-of-the-Valley . . . . .	28
Nursery Stock . . . . .	20-22
Pansy Plants . . . . .	28
Plants Suitable for Hedges . . . . .	24
Poultry . . . . .	29
Renovating Mixture for old Lawns . . . . .	2
Roots . . . . .	18
Roses . . . . .	25, 26
Shade Trees, Ornamental . . . . .	23
Stove and Greenhouse Decorative Plants . . . . .	28
Trees and Shrubs, Evergreen . . . . .	24
Trees of Weeping Growth . . . . .	23
Tubs, Wooden . . . . .	29
Vases . . . . .	29
Vegetable Seeds . . . . .	11-17

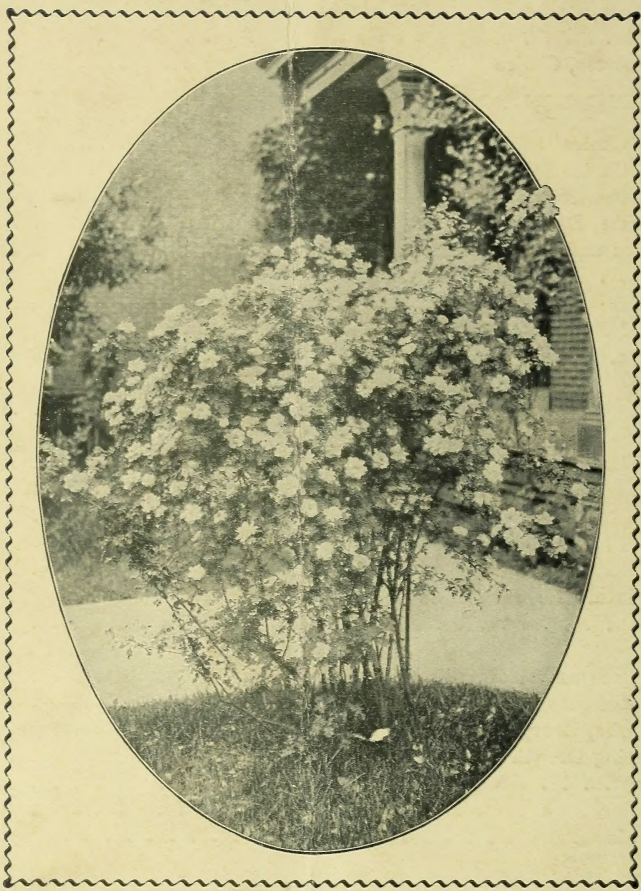
**TELEPHONES:**

Store, No. 751.

Greenhouses, No. 6.







# JAMES C. MURRAY

Florist and Seedsman

TELEPHONES :

Store, No. 751

Greenhouse, No. 6

403 Main St., PEORIA, ILLINOIS